

VIRTUAL FOLDER SERIES

THE STODDARD-TEMPLETON COLLECTION

GLASGOW UNIVERSITY ARCHIVE SERVICES

This series of virtual folders serves as an introduction to the Stoddard-Templeton Collection, and most particularly the Stoddard Design Archive, now held at Glasgow University Archive Services.

The collection contains several hundred folders which have been catalogued with the titles which were part of the original reference system that the Stoddard design department used. The archive contains original design sketches and patterns, the latter having been made on squared graph paper, as part of the conversion process to create woven design.

A selection of designs has been chosen to illustrate the type of work that is contained within the archive and offer a guide, in conjunction with the online catalogue, to the breadth and quality of work which the archive contains.

All images are courtesy and copyright of [Glasgow University Archive Services](#).

Each design is given its catalogue reference number only – further information about the design is available from the [online catalogue](#).

Design and layout by Lin Cunningham, MLitt Dress and Textile Histories
Post-graduate placement, 2014

STOD/DES/122/4/1-12

SMALL ART DECO

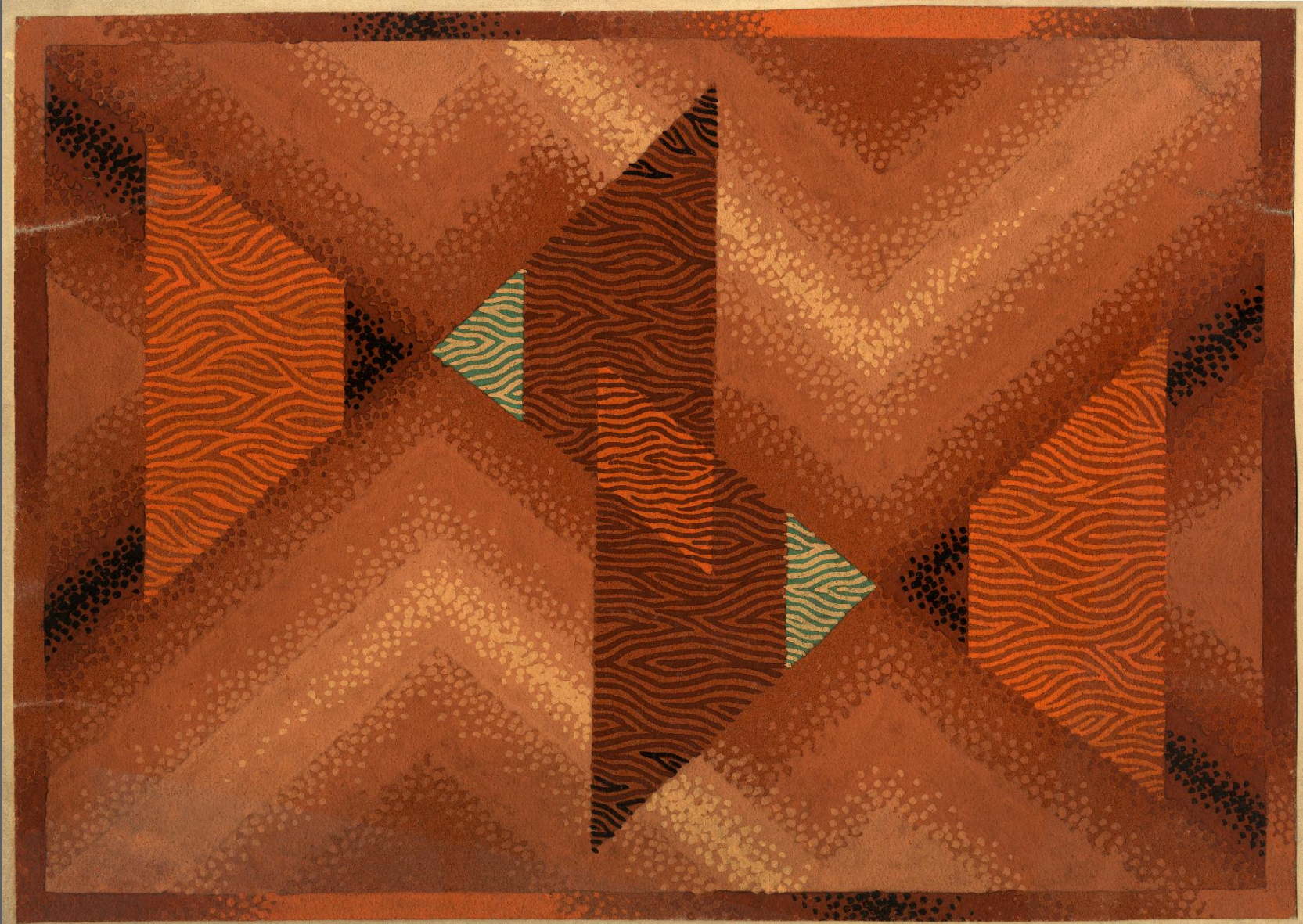
This is a reproduction of an entire folder of twelve designs, and although there is very little information about when they were made – their colour and pattern suggest the 1930s.

They are all gouache on paper, several could be converted into a full repeating pattern but many are compositions for rugs.

Design 8 is by David Taylor, who graduated from the Glasgow School of Art in 1932, and successfully designed for both printed and woven textiles.

Designs 9 – 11 are all by the designer Charles A. Allen, his signature is on the reverse, a British textile designer working during the 1930s.

All other designs are by unknown designers.



STOD/DES/122/4/1

58810



SM
M 2307

STOD/DES/122/4/2



577 pages
12 x 9. 1/2 inch

China



SM
M 2326

STOD/DES/122/4/3



STOD/DES/122/4/4



STOD/DES/122/4/5



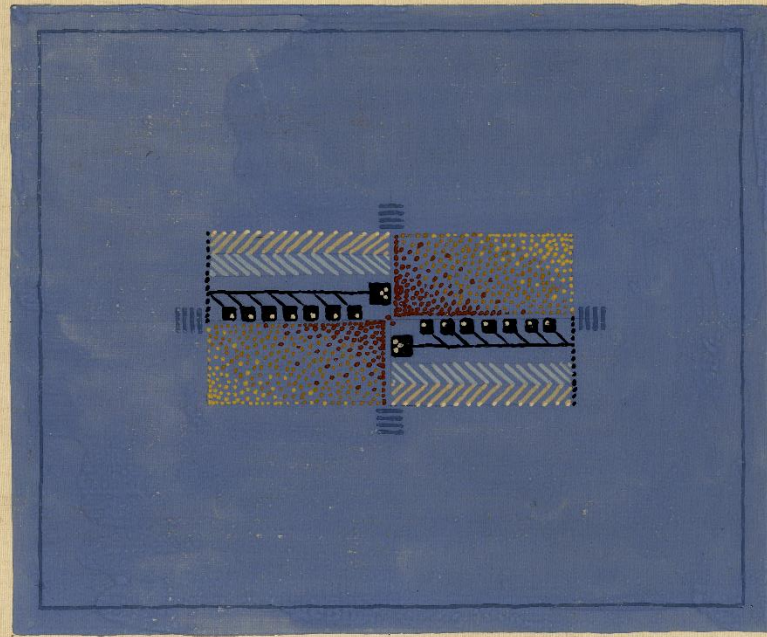
STOD/DES/122/4/6



STOD/DES/122/4/7

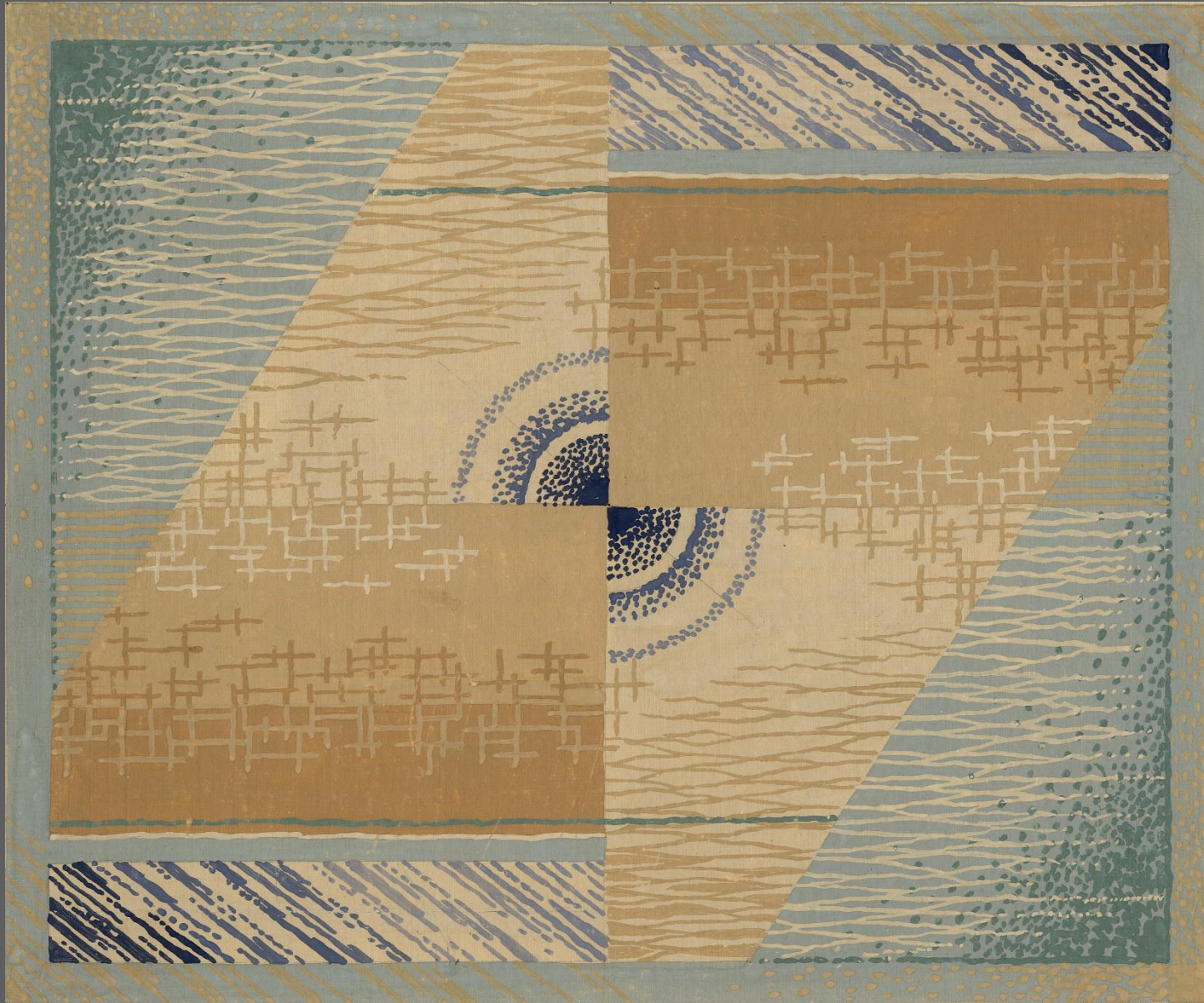


STOD/DES/122/4/8



● $\frac{SN}{M}$ 2419

STOD/DES/122/4/9



STOD/DES/122/4/10



STOD/DES/122/4/11



STOD/DES/122/4/12