

Ogle Hill Excavations 2015



Data Structure Report

Tessa Poller

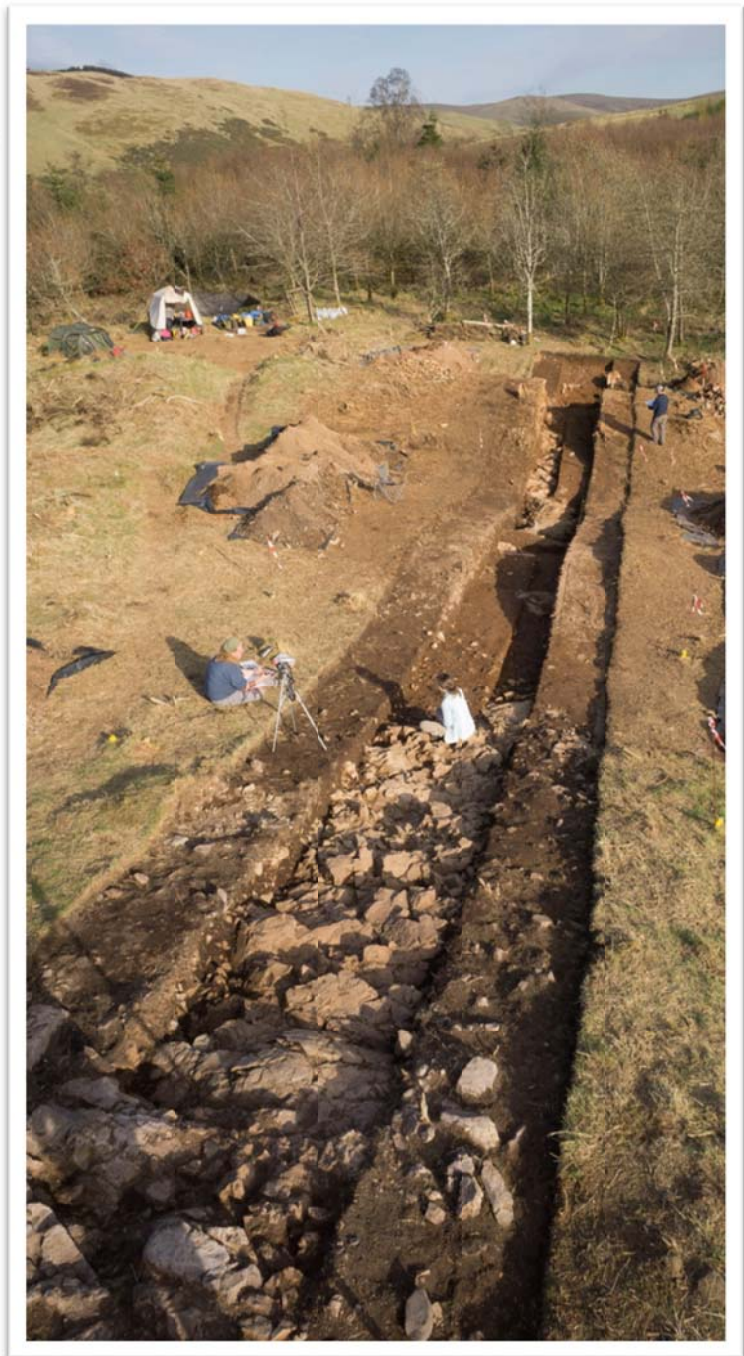


Table of Contents

Summary	1
1 Introduction	1
1.1 Aims	1
1.2 Archaeological Description & Background	2
1.3 RCAHMS Analytical Survey	3
1.4 Geophysical Survey	4
1.5 Geology, Topography & Vegetation	5
2 Methodology	6
2.1 Excavation Methodology	6
3 Results	7
3.1 Trench A	7
3.2 Trench B	15
4 Discussion	18
4.1 Summit of Ogle Hill	18
4.2 Banks	18
4.3 Later Interventions & the Victorian Summerhouse	20
5 Acknowledgements	21
6 References	21
7 Appendices	22
7.1 Contexts	22
7.2 Finds	27
7.3 Drawings	31
7.4 Samples	33
7.5 Photographs	35

List of Illustrations

<i>Figure 1 Ogle Hill depicted on the OS 1st edition 25 inch map (1866)</i>	2
<i>Figure 2 Plan of Ogle Hill - left (Christison 1900)</i>	2
<i>Figure 3 Earthwork survey of Ogle Hill (field drawing) ©RCAHMS</i>	3
<i>Figure 4 Gradiometry Results</i>	5
<i>Figure 5 Resistivity Results</i>	5
<i>Figure 6 Location of the excavation trenches</i>	6
<i>Figure 7 Dark ashy circular spread (1036) with remains of the stony bank (1022)</i>	7
<i>Figure 8 Bedrock below the summit</i>	8
<i>Figure 9 Stone and silt spread (1025) below the summit</i>	9
<i>Figure 10 E-facing section of bedrock cut pit [1051]</i>	10
<i>Figure 11 W-facing section of outer bank mid excavation</i>	12
<i>Figure 12 View westwards across Ogle hill showing dense vegetation coverage</i>	13
<i>Figure 13 W-facing section of Trench 1</i>	14
<i>Figure 14 View of platform from the SW</i>	15
<i>Figure 15 Post-excavation plan of Trench 2</i>	17
<i>Figure 16 View of Ogle Hill from the S with excavations on the summit visible</i>	18
<i>Figure 17 Putative stone facing of the middle bank on the S side of the hill</i>	19
<i>Figure 18 1862 Cloanden estate map</i>	20

Summary

As part of the SERF hillfort programme an excavation was carried out on Ogle Hill between 28th March and 18th April 2015. A long trench exposed the ramparts, showing the outer bank to have been a dump rampart. An outer ditch provided the material for the earthen core, which was supported by a timber palisade. Stone was incorporated in the upper layers and outer face, but no in situ facing survived. The middle bank was also a dump rampart, but in this case, bedrock cut pits were quarried and chipped stone and earth formed the core of this bank. The upper rampart survived only as a low stony bank, cutting an earlier charcoal and ash rich feature. A second trench explored a strong magnetic anomaly identified on the gradiometry survey, which turned out to be the remains of a Victorian summerhouse. The remains of the summerhouse consisted of a stone platform in which frequent nails were recovered, suggesting the walls and roof would have been timber.

1. Introduction

1.1 Aims

The aims of the SERF hillfort programme are to establish a relative chronology between the forts within the environs of Forteviot and to provide a record of the construction and destruction of the defining features (i.e. ramparts and ditches).

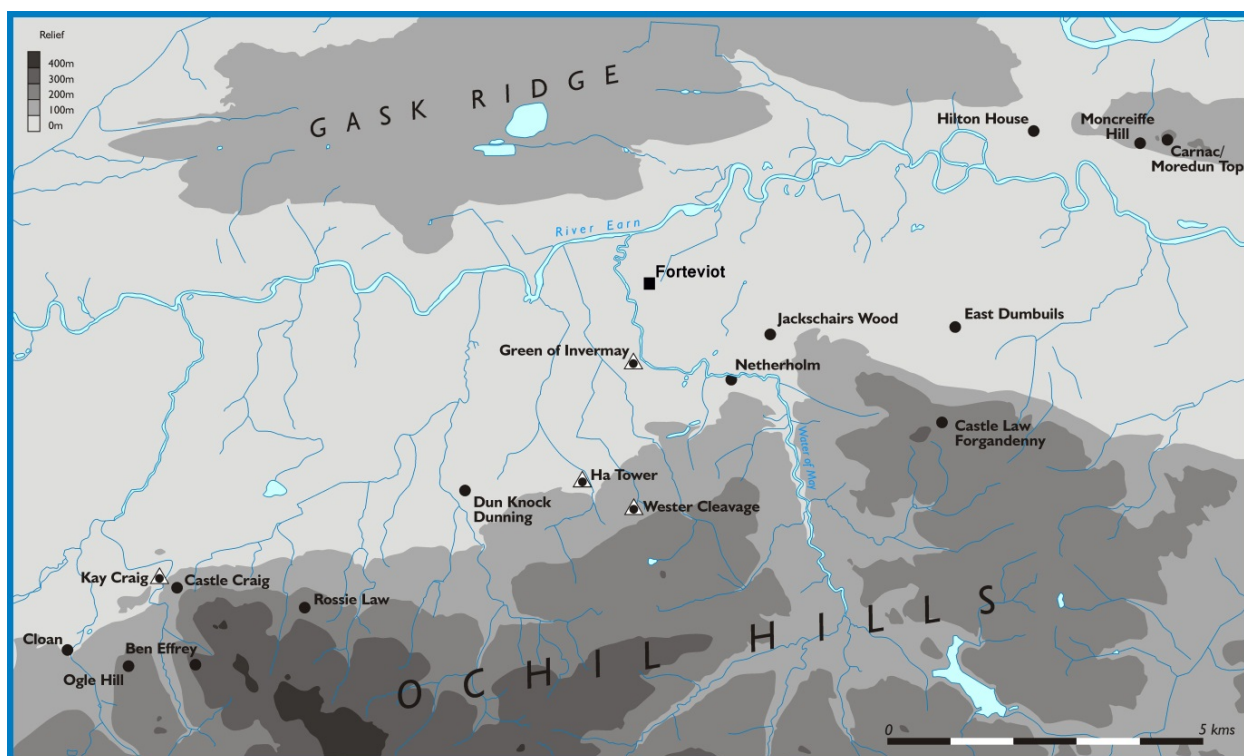


Figure 1: Location of Ogle Hill in relation to other hillforts surrounding Forteviot

The aims of the proposed excavations will be to:

- gain a detailed understanding of the sequence of construction, use and destruction of the site as a hillfort;
- establish a secure chronological framework for the construction, use and destruction of the site as a hillfort;

- characterise the archaeological features identified through geophysical survey; and
- explore the preservation of archaeological deposits in different areas of the site

1.2 Archaeological Description & Background

No previously recorded archaeological investigations have been carried out on Ogle Hill (NN91SE 3; NN 9694 1148, Schedule 3073). The site has been attributed to the Picts and the Romans on historical maps (Figure 1).

The Ordnance Survey 1st edition 25 inch map (1866) depicts a track running over the hill and across the NE ramparts. A field boundary cuts across the fort, E to W. These features are not illustrated on the OS 2nd edition 25 inch to a mile map (1901) or any subsequent OS maps.

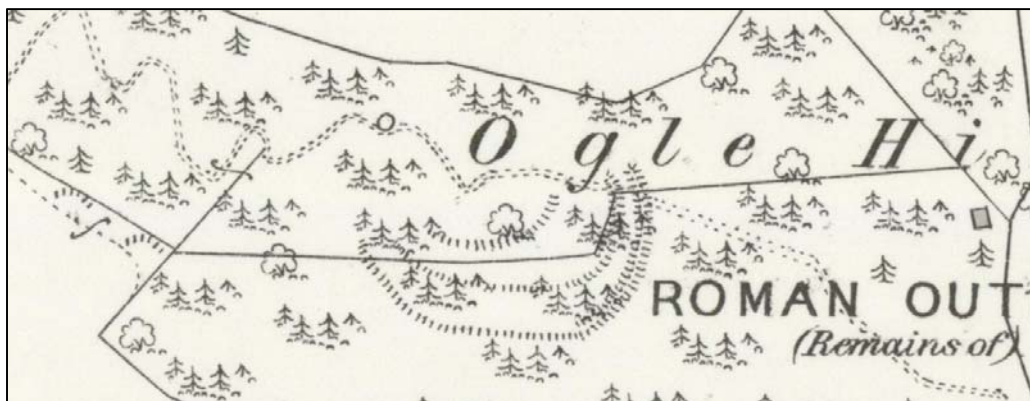


Figure 1: Ogle Hill depicted on the OS 1st edition 25 inch map (1866), labelled as Roman Outpost (remains of)

As part of his field survey of Scottish forts Christison visited Ogle Hill (Christison 1900) (Figure 2). He described the summit to have the remains of a collapsed stone wall along its eastern edge. He notes a rampart just below this stone wall and an outer work with a possible outer ditch further down slope.

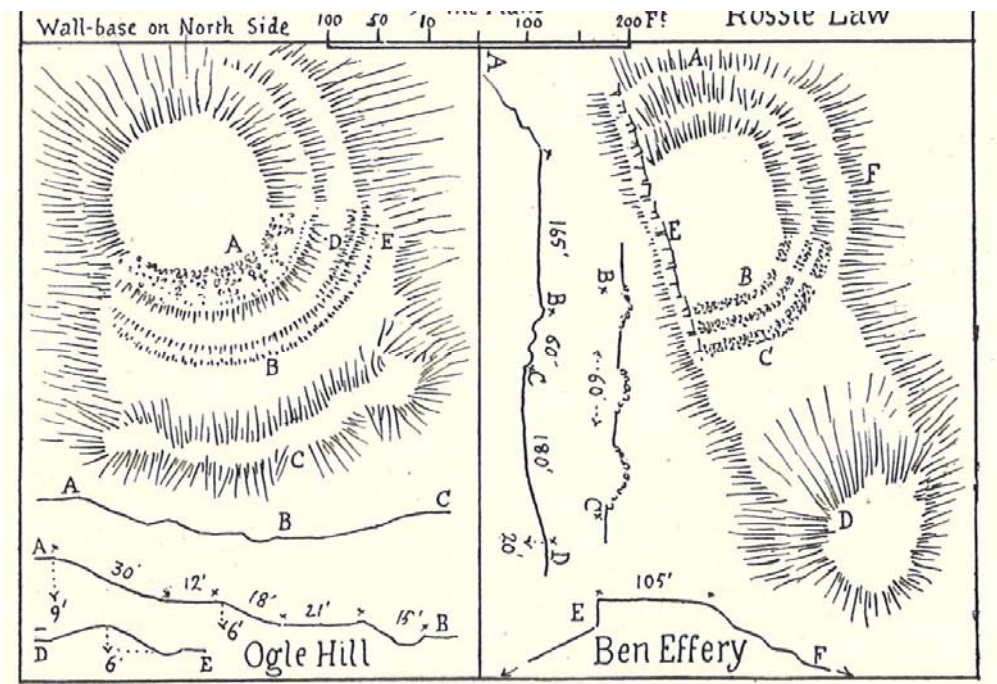


Figure 2: Plan of Ogle Hill - left (Christison 1900)

During the Marginal Land survey by the RCAHMS Ogle Hill was revisited by Kenneth Steer in 1956. His observations coincide with Christison's ([CANMORE: NN91SE 3](#)). When the Ordnance Survey examined the site in 1967 it was largely overgrown and no differentiation was made of the character of the ramparts (*ibid*).

1.3 RCAHMS Analytical Earthwork Survey

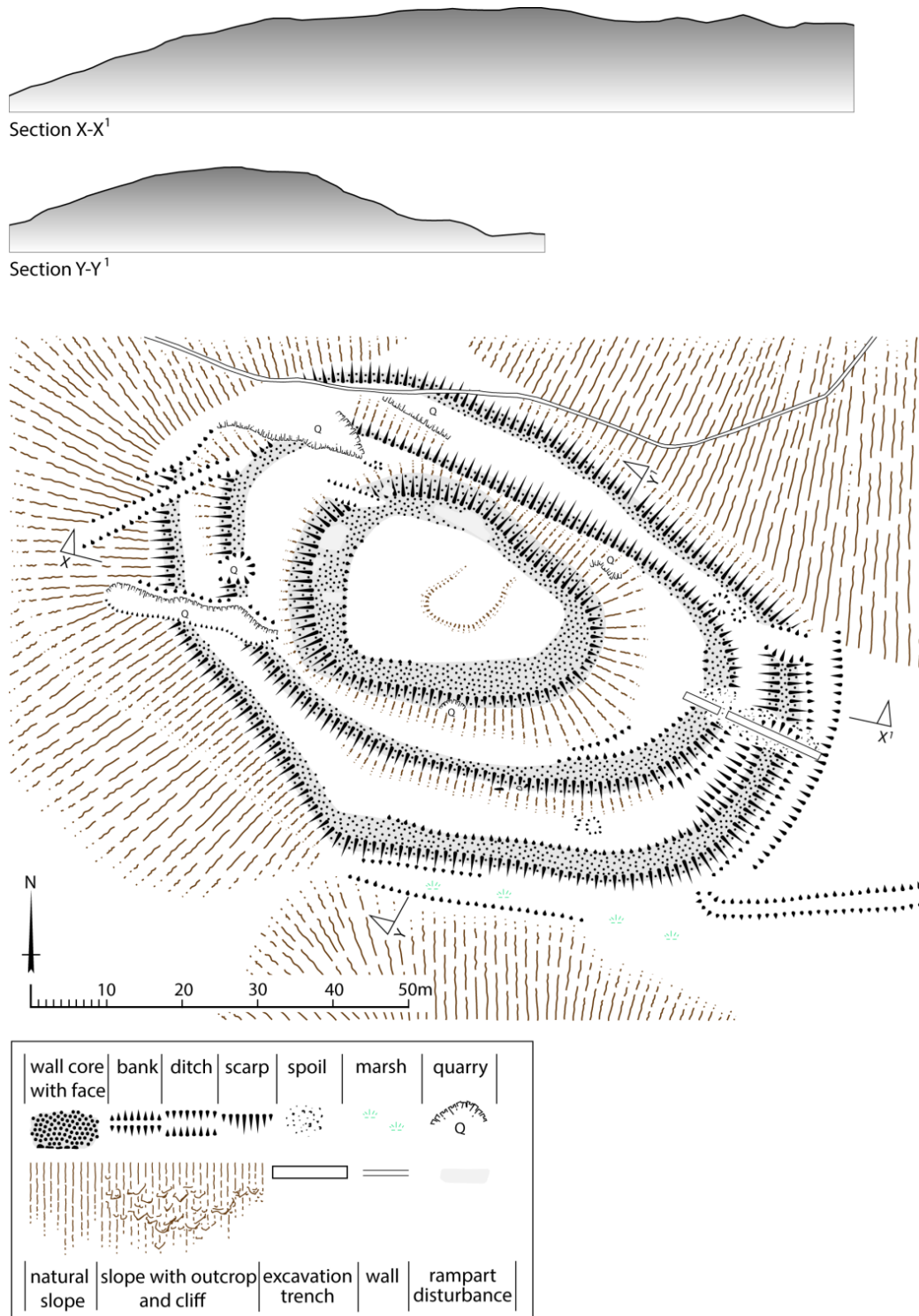


Figure 3: Earthwork survey of Ogle Hill (field drawing) ©RCAHMS

In February 2015 RCAHMS conducted a detailed earthwork survey of Ogle Hill fort as part of the SERF project (Figure 2). This survey characterised the variable preservation of the banks surrounding the hill. The outer two banks appear more substantial on the E side of the hill in the direction of easiest approach to the site. At this point outer ditches to the banks are visible. These ramparts, however, can be traced all around the hill, though in most places largely reduced to terracing. No entrances could be clearly deciphered. The NW end of the fort has been heavily quarried, removing part of the outer two banks. A low bank following the crest of the summit, again without a clear entrance gap, was recorded. No internal features relating to the occupation of the fort were identified.

The RCAHMS survey also revealed the evidence of a previously unknown excavation trench cutting across the outer two banks in the E end. According to the owner Richard Haldane this may be antiquarian excavations undertaken in the first half of the 20th century.

1.4 Geophysical Survey

A geophysical survey was undertaken between the 4th and 6th March 2015. The main aims of the survey were to define the character of the hill fort and to record any unknown features. Both gradiometric and earth resistance techniques were employed.

The results of the gradiometry survey revealed a large igneous dyke cutting across the S side of the hill.

Only small areas of the ramparts were detectable within the survey area. Nonetheless, the results suggest that the characters of the outermost and middle rampart on the E side of the hill are

Possible evidence for the outer face of the inner enclosure was recorded on the summit.

A circular feature, about 3.5m in diameter, was detected in the NW end of the gradiometry survey on a terraced area within the second rampart. A similar sized circular feature is depicted on the Ordnance Survey 1st edition map (1866). The high magnetic response suggests that this feature has been affected by a high temperature which has altered its magnetic character, and therefore may be a kiln.

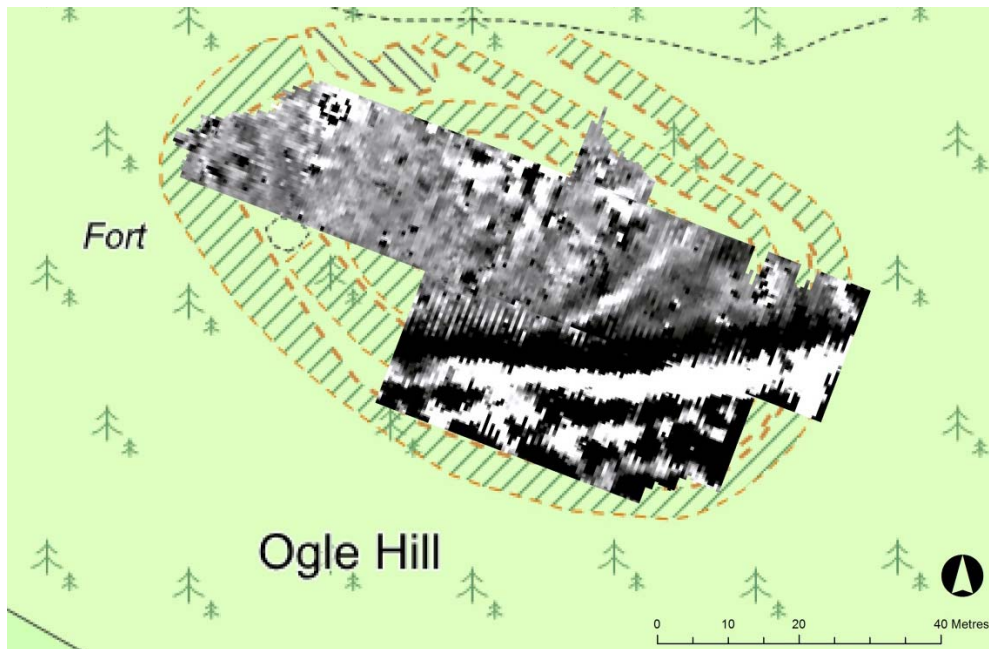


Figure 4: Gradiometry Results

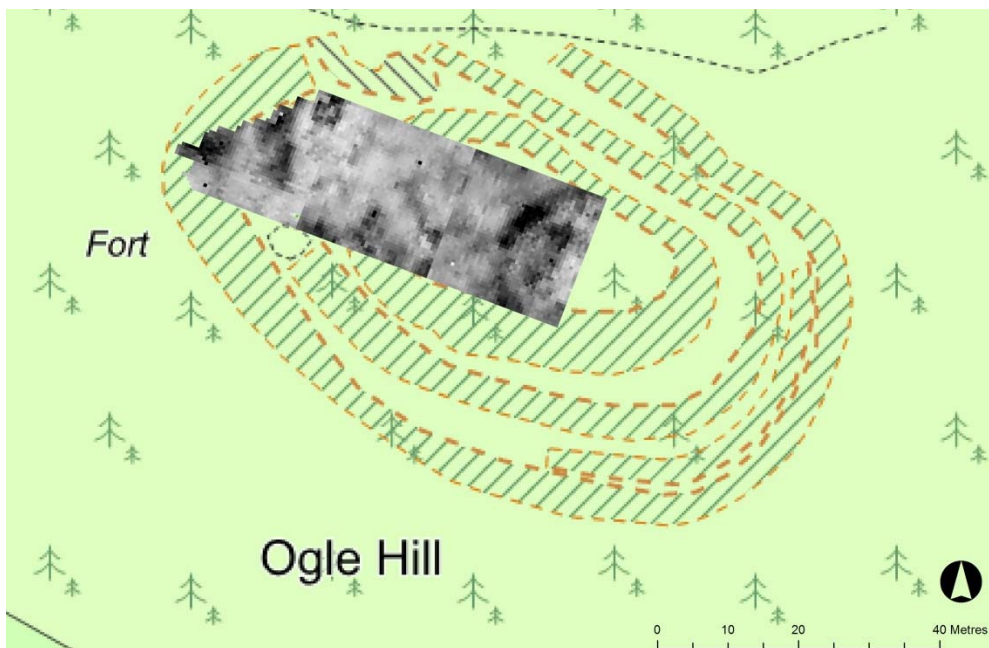


Figure 5: Resistivity Results

1.5 Geology, Topography & Vegetation

The fort lies at the end of a spur of the Ochils, running NNW-SSE, and located on the W side of the Pairney Burn, approximately 240m above sea level.

The underlying geology is igneous of the Ochil Volcanic Formation (BGS 1:50,000).

The site had been with a wooded area since the 19th century. Large trees surrounding the site were cut down several years ago with the brush left at the base of the hill. In the intervening period smaller, self-seeded, coniferous trees, broom, bracken, gorse bushes and grass grew across the site.

Prior to the survey larger vegetation, such as the broom and small trees, were cut down with agreement from Historic Scotland.

2. Methodology

2.1 Excavation Methodology

Excavations took place between 28th March and 18th April 2015. As part of the SERF hillfort programme, these excavations were undertaken by staff and students from Glasgow University, local volunteers. Supervision was carried out by Cathy MacIver from AOC Archaeology.

Two trenches were excavated (Figure 6). Trench 1 extended across the three visible ramparts and measured 4m wide by just over 40m in length. Trench 2 was positioned over a strong magnetic anomaly detected through the geophysical survey and measured 6m by 5m with a small 4m by 2m extension.

Contexts were recorded in plan and section by measured drawing, digital photography and written description on *pro forma* sheets. The trench locations were recorded in three dimensions. Artefacts were recorded by context and in three dimensions if they were determined to be *in situ*. Bulk soil samples and small sub samples for chemical analyses were taken from each *in situ* context as well as the topsoil. After excavation and recording the excavated material was replaced (excluding samples) and the turf reinstated.

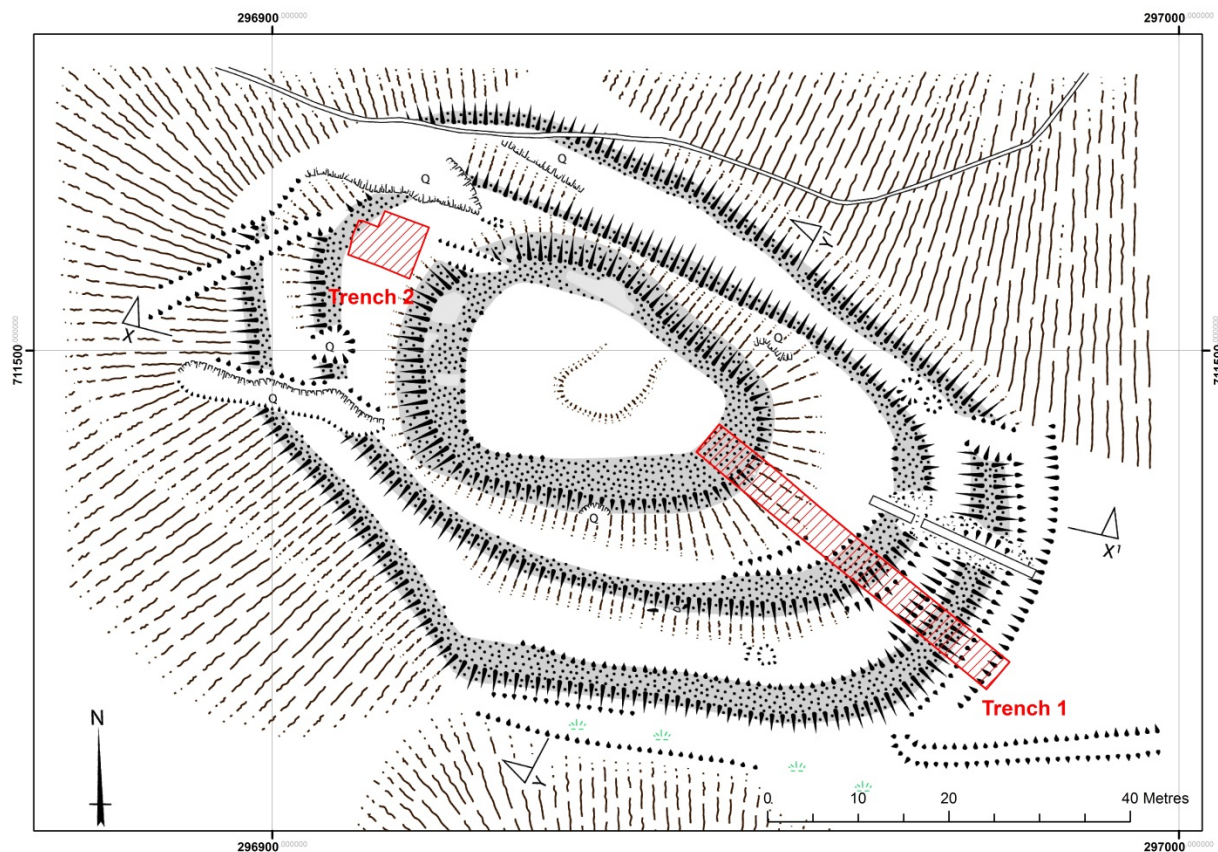


Figure 6: Location of the 2015 excavation trenches overlying RCAHMS plan of Ogle Hill ©Crown Copyright

3 Results

3.1 Trench A

(Figure 13)

3.1.1 The Summit

The character of the bedrock on the summit of the hill, in the N end of the trench, was uneven with occasional cracks and gaps on the surface. Directly above the bedrock were patches of smaller shattered bedrock fragments surrounded by occasional dark reddish brown silt (1019 & 1020) and a spread of compacted reddish brown gravel (1054).

Approximately 4m from the N end of the trench, directly on top of the bedrock, was a roughly circular spread, measuring roughly 1.5m E to W by at least 1.5m N to S, of heat affected sandy silt with occasional stone and charcoal flecks (1064). Above this was a thick deposit of dark black brown ashy soil with occasional fragments of burnt bone and fire-cracked stones (1036).

The N end of this deposit was steeply cut when a stone and earth bank was constructed [1059]. A low spread of reddish brown silt with inclusions of angular stone comprises the remains of this bank (1022 & 1023). At a later stage some of this bank material has then slumped over or was spread across the dark ashy soil (1036) and thus concealing it. The bank only survives as a very low feature (measuring about 2.5m in width and up to 0.6m in overall height in the trench). Below this bank material the bedrock was distinctly smoother than in the surrounding area.



Figure 7: Dark ashy circular spread (1036) with remains of the stony bank (1022) to the right of the photo

Below the topsoil, on the surface of the surviving remains of the bank were several possible stone settings, such as (1018) which was composed of a concentration of flat stones, measuring 1m by 1m overall. A clear purpose of these features could not be determined. These may simply be coincident arrangements of stone, but they may also be part of the bank or vestiges of later constructions.

Overlying the edge of the slumped bank material and spreading to the break of slope was a deposit of dark brown silty soil with medium angular stones, interpreted as hillwash mixed with eroding bank material, which contained several discrete clay patches (1024). A steep break in the slope, just over 10m from the N end of the trench, is marked by a roughly quarried bedrock edge. From here the undulating bedrock slopes steadily southwards.



Figure 8: Bedrock below the summit

Downslope, on top of the bedrock, there were several isolated patches of material; including a dark clayey silt (1032) and silty gravel deposits (1031 & 1033). At the base of the slope was a thin deposit of reddish brown silt (1026) overlain by a spread of reddish brown silty gravel with angular stone (1034). These layers have been interpreted as dumps of discrete material caught within depressions of the bedrock or, in relation to the layers at the base of the slope mixed with hillwash. A patch of small angular stone, recorded midway down the slope was proposed to be evidence for *in situ* frost shattered bedrock (1038). Extending from the break of slope to the base, and covering all these spreads and patches, was a layer of angular stone situated within an matrix of dark brown silt, up to 0.4m in thickness (1025). This layer also was interpreted to be hillwash, perhaps some of the collapsed remains of the stony bank on the summit of the hill.



Figure 9: Stone and silt spread (1025) below the summit of the hill

At the base of the slope, overlying the spread of silt and stone (1025) was a medium brown finely sorted silt with occasional stone (1009). Above this was a deposit of hillwash composed of loose mid brown loam with frequent root disturbance (1005).

On the mid slope below the summit were two discrete patches above the silt and stony deposit (1025); a gravel patch (1002) and an area of stones surrounded by a dark soil matrix (1003). Although these may be the remains of eroded bank material, these layers were aligned with a small and low crescentic mound that extended just beyond the trench and perhaps were the remains of a tree throw.

The topsoil which covers the upper part of the trench was distinct from the rest of the trench by type of vegetation cover and root disturbance (1017) (see section 3.1.4). Within the topsoil at the summit was a cluster of stones, perhaps the disturbed remains of the bank as it eroded further (1021).

3.1.2 Rock Cut Pits and Middle Bank

Below the summit the original natural deposits formed a relatively level surface. Above the bedrock the natural glacial till was characterised as a very compact deposit of light brown silty clay up to 0.3m in depth (1042).

Interpreted as a quarry for the middle bank the bedrock had been cut as two pits or ditch segments directly in front of the bank. The W pit measured 2.3m in width by at least 1.6m in length (running into section) and up to 0.6m in depth [1063]. The lowest fill of the pit was a light brown silty clay (1044). The E pit measured 2.2m in width by at least 1.4m in length (running into section) and up to 0.9m in depth [1051]. Slumped along the N face of the pit at the base of this pit was a compact mid to dark brown grey gritty silt up to 0.1m thick, suggesting the pit had been waterlogged at one point in time (1049). Above this was a thin layer of light brown sand (1048) and then a deposit of slightly less gritty material (1043).



Figure 10: E-facing section of bedrock cut pit [1051]

Immediately to the N of the rock cut features [1063] & [1051] was the middle bank. At the base of the bank was a well-compacted medium brown loam with occasional stones (1041). This layer was interpreted to be either an initial bank layer of redeposited topsoil or the remains of an old ground surface. Above this the bulk of the bank comprised deposits of chipped stone and silts, although tip lines marking individual dumps of material within the bank were visible, it was impossible to follow and disentangle each of the dumps because of subsequent mixing and weathering over time. The core material of the bank was a reddish brown clayey silt with inclusions of rounded and angular

tone (1040). On top of this, on the S side of the bank was a fairly loose deposit characterised by numerous small to medium angular stones within a loam matrix (1007). This deposit was quite substantial and appears to have slumped within the upper voids of the rock cut features [1063 & 1051]. It was impossible to differentiate the slumped element of this context from *in situ* material. On the N side of the bank the core deposit (1040) was overlain by a greyish brown silt with frequent angular stone (1008). This deposit seems to have been dumped within a scoop or cut section of the core bank, indicating there was a secondary reworking or later truncation and construction of this feature. Overlying this bank were the deposits of hillwash (1009 & 1005).

To the S of the rock cut pit [1063] was a small hollow in the bedrock which was filled with light brown sand with flecks of charcoal and dark patches (1037), above which a layer of finely sorted hillwash formed (1006).

3.1.3 Outer Bank and Ditch

To the S of the rock cut pits was the outer bank with accompanying outer ditch. Below the outer bank there was a change in the natural geology. It is here that the geophysical survey detected a large igneous fault (Poller 2014). The bedrock forms a small ridge and substantial subsoil deposits were encountered, which the builders of the bank may have intentionally exploited. On the N side of the bank, within the cracks of the bedrock was a natural deposit of dark brown pink clay (1027). Above this and spread across the base of the bank was a yellowish brown silt with occasional small stones (1055). This layer may be the remains of a preserved old 'B' horizon or topsoil. On top of this was a distinct deposit of dark brown sandy silt (1050), which may be an *in situ* old ground surface or the initial layer of the bank comprising redeposited topsoil.

The outer ditch cut through natural glacial clay deposits and exposed, in a few places, the underlying bedrock [1052]. Measuring up to 3.5m wide and 1m in depth the ditch had a U-shaped profile with a rounded base. The material from the excavation of this ditch was most likely incorporated into the bank.

Just above the ditch, at the base of the N side of the bank, a palisade trench, about 0.65m in width and 0.6m in depth, cut into the natural subsoil was identified [1061]. This feature was interpreted to have secured the earthen core of the bank and prevented it from slipping bank into the ditch. During excavation it was difficult to clearly determine whether the palisade cut through the yellowish silt (1055) and dark brown sandy silty (1050) or whether these deposits were built up behind it. Some packing stones were noted at the interface with these layers. The fill of the palisade contained a mix of redeposited natural and brown sandy silt with elongated stones, set end-on within the trench suggesting individual posts were supported within the trench (1060). Other packing stones were recorded along the edge of the trench. A layer of loose medium reddish yellow brown silt with some charcoal flecks characterised the upper layer of the palisade and may have formed after the posts decayed or were removed (1053).

Overlying the natural clay between the palisade and ditch, and overlapping part of the palisade fill, was a very thin skim of dark charcoal flecked greyish pink clay and may be a layer deposited during construction (1047).

Behind the palisade above the yellowish silt (1055) and dark brown sandy silty (1050) layers forming the bank were deposited. At the base of the bank was a dump of pinkish brown redeposited natural clay (1030). Above this was a substantial deposit, up to 0.5m thick, of mottled sandy silt containing small stones throughout (1062). At the NW edge of this deposit was a distinct patch, measuring 0.5m by 0.8m, of cobbles (1046). On the top of the bank, above the substantial sandy silt (1062) was a loose bright orange brown sandy silt, which had been heavily disturbed by tree roots. Overlying this on the N side of the bank was a dark reddish brown sandy silt, which had slumped and was eroding downslope (1013). On top of this deposit at the mid slope of the bank was a band, up to 0.7m wide, of cobbles (1014). At the base of the bank on the S side was the layer of hillwash (1006). On the N side of the bank slumped and collapsed sediment and stones extended into the fill of the ditch (1004 & 1011).



Figure 11: W-facing section of outer bank mid excavation showing core matrices, top of (1050)

The fills of the ditch consist of slumped bank material and hillwash. The initial fills, on either side of the ditch, were layers of redeposited natural pinkish silty clays representing initial silting deposits (1057 & 1058). Above this and filling the base of the ditch was a deposit of subangular and rounded stone of varying size, ranging from 0.4-0.1m in dimension, set within a dark grey clayey sand matrix (1039). This deposit was interpreted as collapse stone from the surface of the bank. On the S side of the ditch under a large stone was a pocket of dark sandy material (1056). Above the stony deposit (1039) was a layer of hillwash and further collapse of the earthen core of the rampart (1011 & 1010).

To the N of the ditch [1052] may have been the remains of a very slight counterscarp or traces or *in situ* buried soils similar to that identified at the base of the outer bank. Here the natural subsoil was

an orange silty sand (1045) which was covered by a deposit of silty sand (1028), which may also be *in situ* natural subsoil. Above this was a dark blackish brown clayey silt (1015).

3.1.4. Topsoil

The vegetation cover across this trench varied quite dramatically, from a few sparse broom bushes on the summit to a swathe of dense bracken across the middle bank and N side of the outer bank. The rotting remains of several small tree stumps were found on the outer bank and in the S end of the trench. The roots of the different vegetation had a variable impact on the character of the topsoil and the amount of disturbance on layers below. Bracken roots penetrated and spread horizontally among the deposits of the stony middle bank, causing laminations in the stratigraphy. The topsoil across the S end of the trench was characterised by a dark blackish brown sandy silt with frequent roots (1001). On the summit the topsoil was less rooty and shallow and was given a separate context number (1017).



Figure 12: View westwards across Ogle hill showing dense vegetation coverage (June 2013)

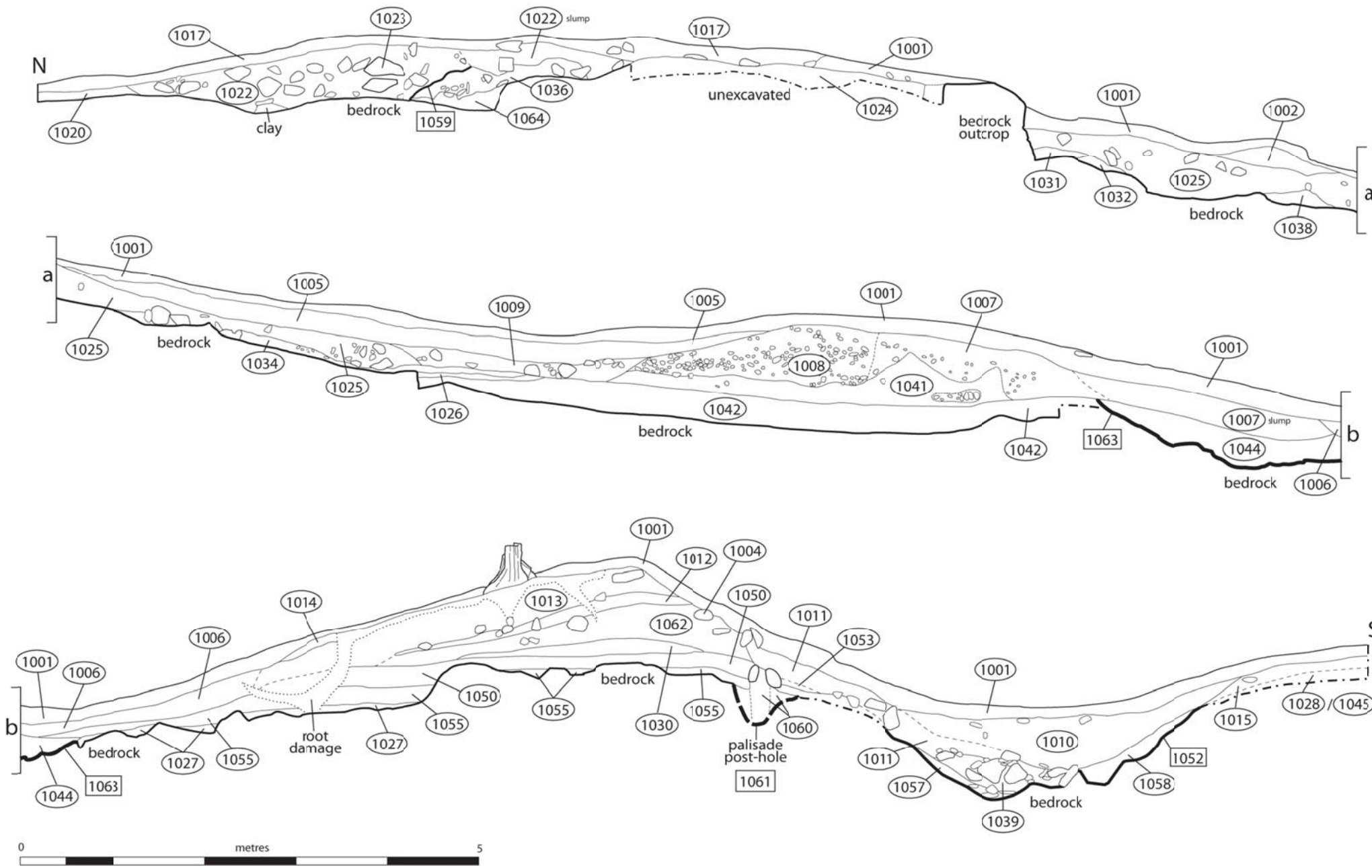
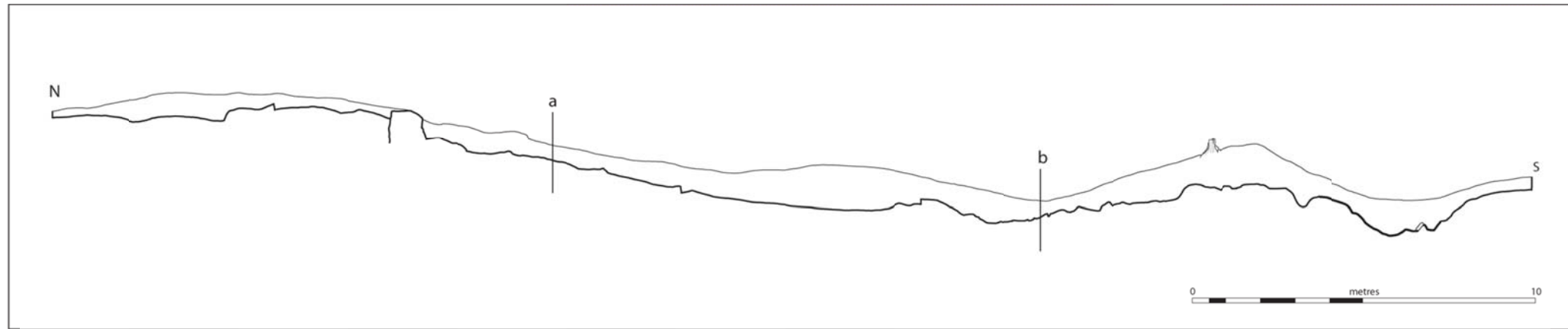


Figure 13: W-facing section of Trench 1

3.2 Trench B

(Figure 15)

3.2.1 Stone Circular Structure

On the NW side of the summit, set within a slight quarried scoop was a roughly circular stone platform. Chipped quarried stone and gravel surrounded by a greyish silt was used to level the undulations within the bedrock (2004). Artefacts noted within this layer were on the surface and likely filtered down between the stones from the topsoil above. Into this layer angular stones (of varying sizes, but on average measuring 0.30m by 0.25m by 0.1m) were placed to form the foundation for a circular structure (2005). These stones form a roughly circular area measuring 6.4m by at least 4.5m. Forming the S edge of this circular area were several stones interpreted to be *in situ* facing [2002]. These stones were angular and on average measured 0.3m by 0.2m by 0.2m. Within the circular stone area five iron fittings had been driven into the bedrock. These fittings were flat upright bars with iron bolts probably used to secure a superstructure.

Covering the stone platform and filling the spaces between the stones was a dark brown friable silt topsoil (2001). This layer contained the majority of artefacts, which included over 300 iron nails and nail fragments; several sherds of glass and pottery and cherry stones.



Figure 14: View of platform from the SW, showing curvilinear edge [2002]

3.2.2 Possible Remains of a Track

Immediately next to the S edge of the circular platform was an irregular patch of light reddish brown sandy silt measuring roughly 0.7m by 0.5m and up to 0.1m thick and lying directly above the bedrock (2003). This deposit may represent part a trackway that curved around the platform and noted on the 1st edition map (see Figure 1) or perhaps relates to an entranceway to the structure.

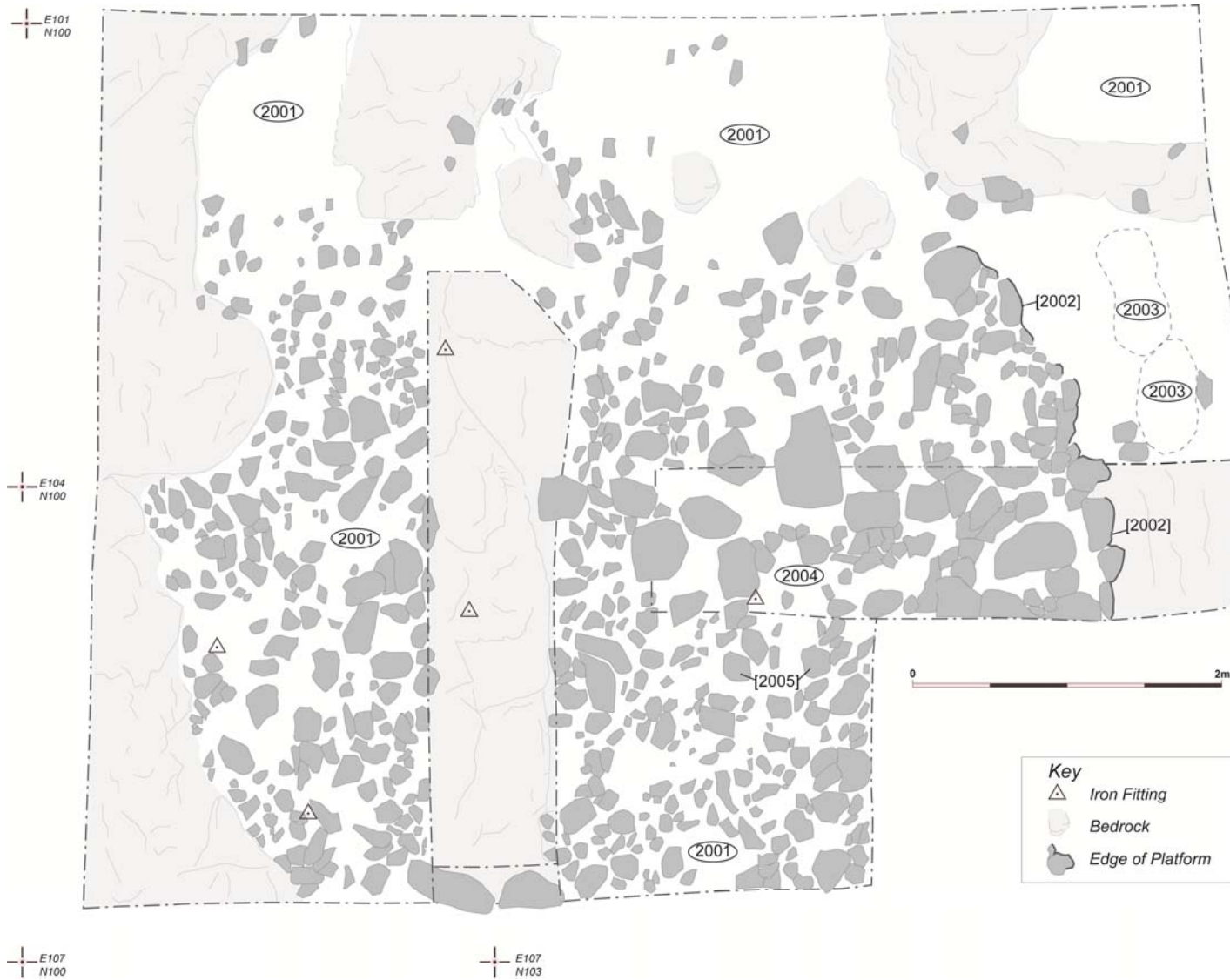


Figure 15: Post-excavation plan of Trench 2

4 Discussion

4.1 Summit of Ogle Hill

Ogle Hill is a volcanic protrusion located at the end of a spur. Approaching the site from the S one would have been able to see the activities carried out on the summit of the hill clearly (see Figure 15). The excavations suggest that the bedrock on slope to the summit would have, at one time, been exposed, perhaps making the prominence of the summit more visually striking.



Figure 16: View of Ogle Hill from the S with excavations on the summit visible over the plantation

The bedrock appeared to have been quarried in several places and a couple discrete patches of material were deposited directly on the bedrock, which suggest activities were carried out directly on the exposed rock. Furthermore, on the summit the large charcoal and ash rich deposit (1036) was above a reddened layer (1064) overlying the bedrock, which indicated *in situ* burning. Perhaps these deposits are remains of a small burnt structure which had been built on the bedrock mixed with debris from occupation and hearth material.

4.2 Banks

The excavation did not reveal any direct stratigraphic relationship between the three banks of the hillfort. Therefore, no clear order of their relative construction, use and decay could be established.

However, both the bank on the summit of the hill and the middle bank showed evidence for phasing on the site.

The summit bank appeared to cut and overlie the charcoal and ash rich feature (1036). The bank material was distinct in composition to the charcoal rich layer. The remains of the summit bank comprised a low spread of stones, just bigger than cobbles, arranged relatively randomly within a silt matrix. Although a spread of stone was recorded downslope, the quantity of material was not substantial. If it is assumed that these stones are tumble from the bank, then perhaps the bank was not a substantial feature originally or that the stones only formed the foundation of a turf and earth feature or, as a third option, that some of the bank material has subsequently been robbed. From the survey of the site several considerable quarries were identified on the NW side of the hill and therefore there would have been opportunity to quarry any rampart material.

Within the trench the middle bank largely comprised earth and chipped bedrock, presumably from the bedrock quarry pits directly in front of this bank. There appeared to be a near vertical cut from the backend of the bank, which was filled with more chipped material. This possible recut may represent a later construction phase of the bank. No signs of the external stone facing noted about 30m W of the trench were found during excavation (Figure 16).



Figure 17: Putative stone facing of the middle bank on the S side of the hill

The outer bank was a 'dump rampart'; however, in this case the underlying geology had changed dramatically and therefore the core of the bank was predominantly redeposited natural silts and silty clay. The material for this bank would have largely come from the external ditch, with stones from other sources. The amount of stones within the base of the ditch suggests that the upper and outer layers of the bank (now destroyed) would have incorporated more stone than currently visible *in situ*. The builders either made use of the change in geology at this point or adapted their

techniques to work with new material. A narrow trench in front of the earthen bank was interpreted to have held timber posts that supported the earthen core from collapse. It is likely that the physical and material make-up of the bank would have changed as it curved around the hill, adapting to changes in geology and topography. A significant change may be reflected in the SW point along the rampart circuit where the outer bank makes a notable 'dog-leg', near the line igneous fault identified during the gradiometry survey (see Figure 3 & 4). The accompanying outer ditch is no longer clearly visible W or N from this point either.

4.3 Later Interventions and the Victorian Summerhouse

Substantial quarries of unknown date are visible on the NW side of the hill and a stone wall (perhaps incorporating stone from the quarries) override part of the outer bank.

In the 1860s the Haldane family took over what was called at that point the 'Cloanden' estate. Part of the remodelling of the estate included the construction of a circular promenade, which ran from the house along wooded margins around the estate. Two summerhouses were built along this route, one of which was positioned on NW edge of the fort with views over the Earn. This feature is marked on the OS 1st edition maps as a circle and on an 1862 estate map as a hexagon, perhaps the latter reflecting the ground plan of the house (Figure 17).

From the large number of iron nails retrieved from the excavation, it is proposed that the walls of the summerhouse were timber planks nailed together, with openings or windows facing the view to Auchterarder. Sherds of bottle glass, including a lemonade top, cherry stones and a few ceramic sherds suggest that picnics were brought up on the walks to enjoy the view and to stroll around the top of the hillfort.



Figure 18: 1862 Cloanden estate map showing hexagonal summerhouse and part of the promenade which took in the upper circuit of the hillfort

The archaeological features recorded during excavation survive in various states of preservation. Apart from natural collapse and erosion and vegetation disturbance, there are probable episodes of robbing that occurred, which has left no detectable trace.

5 Acknowledgements

The author would first like to kindly thank Richard Haldane of Cloan for warmly welcoming us on to his land and to generously giving us permission to excavate.

I would especially like to thank the hard work and supervision undertaken by Cathy MacIver (AOC Archaeology, Alan Duffy and Alan Doherty). This work would not have been completed without the help of many hands, thanks to students Ilia Barbukov, Melissa Bergoffen, Aurime Bockute, Alistair Branagh, Orla Craig, Amy Halliday, Sarah Hudson, Matthew Hunt, Joshua Kragt, Sarah Krischer, Pauric Logue, Sara Manavian, Yoanna Markova, Scott McCreadie, Sophie McDonald, Ian Perry, Katherine Price, Meghan Rathburn, Justine Sharp, Vanessa Smith, Craig Stanford, Chris Sutcliffe, Leonie Teufel; volunteers Jennifer and Alex MacKay, Ken and Jean Bowker, Simon Warren, Glenys Richardson, Marilyn Desmond, Irene Mathewson, Rosemay and Maarten Versteeg; backfilling heros Alison McCaig, Patrick Jolicoeur, Kat MacCaskill and Cat Martin-Lennie; and super staff and the dream team Lorrain McEwan and Gert Petersen. I would also like to thank Clare Ellis for coming to site and providing soil specialist support.

The investigations at Ogle Hill were sponsored by Historic Scotland and monitored for them by Oliver Lewis.

6 References

BGS (British Geological Survey) 1:50,000 solid geology maps, accessed digitally through EDINA Digimap September 2014.

CANMORE NN91SE <http://canmore.rcahms.gov.uk/en/site/26068/details/ogle+hill/>

Christion, D 1900 'The forts, "camps", and other field-works of Perth, Forfar and Kincardine', Proc Soc Antiq Scot, vol.34

OS (Ordnance Survey) 1866 25 inch to a mile 'Perth and Clackmannan Perthshire Sheet CXVIII.7 (Combined)' Surveyed 1860.

OS (Ordnance Survey) 1901 25 inch to a mile 'Perth and Clackmannanshire Sheet 118.07' Revised c. 1899.

7 Appendices

7.1 Contexts

7.1.1 Trench A

Context	Description	Interpretation	Relationship to other contexts
1001	Blackish brown sandy silt	Topsoil	similar to 1017 but more bracken root disturbance
1002	Crescentic lump of gravelly material extending into the trench where it measures 0.6m by 0.5m	Possible tree throw	Under 1001, over 1025
1003	Circular patch of stony material within a dark brown soil matrix	Possible tree throw or Eroded patch of upper rampart material	Under 1001, over 1025
1004	Small area of yellowish brown sandy silt with frequent small rounded stones on S side of outer bank	Disturbed and eroding outer bank material	Within 1011 (Same as); over 1013
1005	Loose mid brown loamy silt with occasional stone, boundary defined by frequent bracken roots	Upper level, hillwash, disturbed by bracken roots	Under 1001; above 1008 and 1009
1006	Friable reddish brown silt with occasional small stones	Probably hillwash/slump from south face of outer bank	Under 1001; above 1007, 1044
1007	Loose mid brown loamy silt with frequent small to medium angular stone and moderate bracken roots	Upper middle bank material, difficult to differentiate <i>in situ</i> from slumped material	Under 1006; above 1040, 1044
1008	Loose greyish brown silt with moderate to frequent small and medium fragments of angular stone, some modern roots	Bank material on north side of middle bank, some slumping	Under 1005; above 1040, 1041
1009	Friable mid brown silt, distinct from the surrounding contexts by having less stone and holding more moisture	Hillwash/slumping that has been sorted and has collected at the base of the slope behind the north slope of the middle bank	Under 1001, 1005; above 1025, 1008
1010	Medium compaction, mid orangey brown, silty clay, with very occasional small stone	Hillwash/slumping from southern face of the outer bank forming the upper fill of the ditch	Under 1001; above 1011
1011	Friable dark orange brown silty clay with occasional medium angular and subangular stone	Slumped material from outer face of outer bank	1004 part of this deposit; under 1010; above 1039
1012	Loose bright orange brown sandy silt	Upper deposit of the outer bank	Under 1013, above 1062
1013	Loose dark reddish sandy silt with frequent stone, similar to 1062	Upper deposit of the outer bank	Under 1001, above 1012

1014	Layer of small cobbles set within a matrix of light orange brown medium sand	Rampart material which may have slid as a coherent context on the north facing side of the outer bank	Under 1001, above 1013
1015	Friable dark blackish brown clayey silt	Possible remains of a counter escarpment/ <i>in situ</i> buried topsoil	Under 1001, above 1028
1016	Same as 1025		
1017	Dark blackish brown sandy silt	Thin topsoil on summit of the hill, considerably less bracken root disturbance but broom vegetation	Same as 1001, above 1020, 1024
1018	A possible stone setting of flat stones overall measuring 1.0m by 1.0m and up to 0.1m in depth	Perhaps a setting associated with the construction of the rampart	Under 1017; above 1019
1019	Very compact layer of frost shattered bedrock which overlies solid bedrock	Frost shattered/heaved bedrock	Under 1018; above bedrock
1020	Layer of small stones within a medium reddish brown soil matrix, similar to 1019	May be natural weathering of bedrock in NE corner the of the trench	Under 1017; above bedrock
1021	A superficial layer of floating stones within 1017, same as 1017	Eroding rampart material within thin topsoil	Within 1017
1022	Loose medium brown silty sand, matrix surrounding stones 1023	Soil matrix of the remains of the upper bank	Associated with 1023; under 1017, 1024; above 1036; fill of 1059
1023	Angular stones of varying sizes within the silty sand matrix 1022	Stones forming the remains of the upper bank	Associated with 1022; under 1017, 1024; above 1036; fill of 1059
1024	Angular stones of medium sizes within the dark brown loam to the S of the remains of the upper bank	Hillwash mixed with eroded bank material	Under 1017; above 1022, 1036
1025	Spread of angular stones down the S face of the uppermost slope within a silt matrix	Similar to 1024 but below bedrock defined break of slope; hillwash mixed with eroded bank material	Under 1001; above 1031, 1038, 1034, 1033
1026	Compact deposit of reddish brown soil surrounding angular stones, similar to 1025 but matrix different	Hillwash and slump, collecting at base of the slope	Under 1025; above 1034, 1042
1027	Firm dark brownish pink silty clay	Natural boulder clay/ glacial till, filling gaps within the bedrock on N side of outer bank	Under 1055; above bedrock
1028	Friable dark orange brown sandy silt	Possible old ground surface under counter escarpment	Under 1015, above 1045
1029	Same as 1040		

1030	Friable pinkish brown clay with occasional small angular stone	Redeposited natural forming the base of the outer bank	Under 1062, above 1050
1031	Patch of loose dark brown soil directly under break of slope of bedrock on the summit	Possible erosion of bank material or dumping of material during construction of the upper bank	Under 1025; above 1032
1032	Patch of dark brown black clay directly under break of slope of bedrock on the summit	Possible turfy material that has eroded or fallen from the upper bank or dumping of material during construction of the upper bank	Under 1031; above bedrock
1033	Localised skim of reddish brown silt over bedrock midway down the slope below the summit	Possible erosion of bank material after or during construction of the upper bank	Under 1025; above bedrock
1034	A band of reddish brown silty gravel with angular stones on the E side of the trench down the slope below the summit	Hillwash from activity deposits or from upper rampart material	Under 1025; above bedrock
1035	Same as 1036		
1036	Medium compacted dark black brown silty and ashy layer with burnt bone inclusion	Perhaps a dump of hearth material or perhaps <i>in situ</i> fire pit	Under 1022, 1059; above 1064
1037	Mid to light brown sand with very small stones	Fill within a small depression in the bedrock to the south the rock cut pit [1051]	Under 1006; above bedrock
1038	Same as 1025		
1039	Frequent medium subangular stone and sub rounded stones set within a friable dark grey brown clayey sand	Collapsed stone from outer face of rampart into the ditch	Under 1011, above 1058
1040	Friable reddish brown clayey silt with frequent small to medium rounded and angular stone	Core material in middle bank	Under 1007, 1008; above 1041
1041	Well compacted mid brown loam with occasional stone	Possible buried soil under middle bank	Under 1040; above 1042
1042	Very compact light brown silty clay occasional medium angular stones	Probably <i>in situ</i> natural subsoil overlying bedrock	Under 1041; above bedrock
1043	Compact light brown sand	Fill of rock cut pit 1051; initial slumping/silting	Under 1007, over 1048; fill of [1051]
1044	Friable light brown silty clay with occasional small stones.	Layer at the base of rock cut 1063	Under 1007, fill of [1063]
1045	Friable light orange brown silty sand	Possible 'B' horizon above natural, under counter escarpment	Under 1028, above natural
1046	Layer of small cobbles, measuring 0.5m by 0.8m at the back edge of the outer bank	Part of south face of outer rampart	Under 1012, same time as 1062, over 1030, 1050

1047	Moderate compaction, greyish silty clay within flecks of charcoal, very thin skim	Possible buried surface/construction layer at south end of outer bank	Under 1011, above boulder clay
1048	Quite compact light brown sand, similar to deposit 1043	Fill of cut 1051	Under 1043, above 1049, fill of 1051
1049	Quite compact mid dark brown grey silt	Perhaps evidence of water at the base of 1051	Under 1048, fill of 1051
1050	Loose, dark brown, silty sand	Possible buried topsoil or redeposited topsoil at the base of outer bank	Under 1030, above 1055
1051	Rock cut pit with rounded end, very steeply sided on the north side, less so on the south side; extends into section	Rock cut feature, not a continuous ditch; located in between the outer bank and in the middle bank. May have been quarry for middle bank	Filled by 1049, 1048
1052	Ditch cut U-shaped in profile, running E-W in the trench. Maximum width 3.5m; maximum depth up to 1.0m	Cut of outer ditch	Initial fills of 1057 & 1058
1053	Medium to loose compaction, medium reddish yellow brown with occasional charcoal flecks	Fill of palisade	Under 1011; over ? 1060; fill of 1061
1054	Hard compacted layer of reddish brown gravel on the summit	Spread of material washed into or accumulated within cervices of the bedrock	Under 1024, 1036, 1022; above bedrock
1055	Loose yellowish brown silt, very occasional small stones	Possible old 'B' horizon or redeposited material overlying glacial till & bedrock	Under 1050, above 1027 & bedrock
1056	Friable, dark blackish brown silty sand	Pocket of material under large stone; collapse from above	May be part of 1039, above 1052
1057	Compact mid greyish pink silty clay	Slumped redeposited boulder clay on north side of ditch	Under 1039, fill of 1052
1058	Friable dark pinkish brown silty clay	Slumped redeposited boulder clay on south side of ditch	Under 1039, above 1052
1059	Linear in plan, aligned in a roughly E-W direction, flat bottomed with gradually sloping sides	Cut for bank on the summit	Cuts 1036 and filled with 1022, 1023
1060	Mixed redeposited natural and loose medium brown sandy silt with settings of angular and sub angular stone forming the edge supporting posts, though individual posts not evident,	Fill and stone settings for a palisade	Under 1053, fill of 1061

1061	Linear in plan, steep-sided, U-shaped in profile, running along the outer edge of the outer bank. Up to 0.65m in width and 0.60m in depth	Trench cut for palisade slot on the north side of the outer bank	Filled by 1060, cut into natural boulder clay
1062	Loose medium mottled with reddish brown sandy silt, frequent inclusions of small stones redeposited boulder clay	Redeposited natural forming part of the outer bank	Under 1012, above 1030
1063	Rock cut feature only partially exposed within the trench. Round ended, fairly steep sided cut through the bedrock	Cut feature located between the middle and outer banks, probably quarry material for middle banks	Filled by 1044, cut into bedrock
1064	Light yellow brown sandy silt with ashy mottled grey areas and stone inclusions (including fire-cracked stones)	Heat affected soil, perhaps relating to an occupation prior to the construction of a bank on the summit	Under 1036; above bedrock

7.1.2 Trench B

Context	Description	Interpretation	Relationship to other contexts
2001	Dark blackish brown friable loam, iron nails and fragments, glass and pottery pottery throughout	Topsoil	Over all contexts
2002	An arc of angular stones, ranging in size but on average 0.3m by 0.2m by 0.2m. One stone deep.	Surviving outer facing of the circular stone platform of the Victorian summerhouse	Under 2001, part of the construction of the stone platform 2005
2003	Friable, light reddish brown sandy silt spread outside the platform area in the N end of the trench	Possible build-up of material relating to a trackway outside the summerhouse	Under 2001, over bedrock
2004	Loose spread of small chipped quarried stone and gravel within loose silt matrix	Degradation of organics from the summerhouse mixed with chipped quarried stone forming the core of the platform	Under 2001, over bedrock
2005	Larger quarried stones, on average 0.25m by 0.2m by 0.4m arranged within a roughly circular area to form a relatively flat platform, some areas disturbed.	Stone platform	Stones set into 2004

7.2 Finds

7.2.1 Trench A

Find	Context	Number of pieces	Material	Description	Date	Initials
001	1001	1	Metal	Wire hoop	28/03/2015	JMcK
002	1001	1	Metal and plastic	Gun cartridge case	28/03/2015	JMcK
003	1001	1	Metal and plastic	Gun cartridge case	29/03/2015	JMcK
004	1001	1	Burnt clay	Burnt clay	30/03/2015	KB
005	1001	1	Ceramic and iron	Bottle top	31/03/2015	AB
006	1001	1	Agate	Agate flake	01/04/2015	CMAC
007	1004	1	Quartz	Worked flake	01/04/2015	TP
008	1014	1	Stone	Possibly worked	01/04/2015	MH
009	1016	1	Stone	Vitrified	02/04/2015	SM
010	1022	1	Flint	Worked	02/04/2015	JMK
011	1022	1	Chert stone	Possibly worked	02/04/2015	SM
012	1022	1	Chert stone	Possibly worked	02/04/2015	IB
013	1025	1	Stone	Smooth on one surface	06/04/2015	JMK
014	1028	1	Quartz	Flake	06/04/2015	KP
015	1022	1	Stone	Stone disc	08/04/2015	GR
016	1028	1	Quartz	Possibly worked	08/04/2015	IP
017	1025	1	Flint	Worked	08/04/2015	JMK
018	1025	1	Bore	Burnt	08/04/2015	MK
019	1011	1	Quartz	Possible flake	08/04/2015	VS
020	1022	1	Stone	Smoothed , possible whetstone	09/04/2015	JH
021	1028	1	Quartz	Large flake	09/04/2015	KP
022	1014	1	Flint	Flake	12/04/2015	IM
023	1036	1	Stone	Hammerstone	14/04/2015	AM
024	1012	1	Stone	Interesting geology, striations	14/04/2015	PL
025	1036	1	Stone	Possible wear	15/04/2015	AM
026	1010	1	Stone	Possible striations	15/04/2015	SMC
027	1055	1	Stone	Possible hammerstone	15/04/2015	SMC
028	1032	1	Stone	Worked quartz	15/04/2015	JMcK
2159	1024	1	burnt bone	burnt bone	01/04/2015	JMcK
2162	1001	1	Metal and plastic	Gun cartridge case	01/04/2015	JMcK
2163	1025	1	burnt bone	burnt bone	01/04/2015	JMcK
2164	1025	1	organic	nutshell fragment	01/04/2015	JMcK
2166	1024	1	organic	charcoal	01/04/2015	JMcK
2167	1037	1	organic	charcoal	01/04/2015	JMcK

7.2.2 Trench B

Find	Context	Number of pieces	Material	Description	Date	Initials
2001	2001	1	Iron	Square nail	09/04/2015	IP
2002	2001	1	Iron	Square nail	09/04/2015	AD
2003	2001	2	Glass	frag/clear	09/04/2015	IP
2004	2001	1	Iron	Nail fragment	10/04/2015	SM/AD
2005	2001	4	Glass	frag/opaque	10/04/2015	SM/AD
2008	2001	3	Clay	pipe fragment	10/04/2015	SM/AD
2009	2001	7	Iron	Nail fragments	10/04/2015	SM/AD
2010	2001	4	Iron	Nail fragment	10/04/2015	SM/AD
2011	2001	5	Iron	Nail fragments	10/04/2015	SM/AD
2012	2001	2	Iron	Nail fragments	10/04/2015	SM/AD
2013	2001	1	Iron	Nail fragment	10/04/2015	SM/AD
2014	2001	2	Iron	Nail fragments	10/04/2015	SM/AD
2015	2001	1	Iron	Unidentified object	10/04/2015	SM/AD
2016	2001	2	Iron	Nail fragment	10/04/2015	SM/AD
2017	2001	2	Glass	Opaque fragment	10/04/2015	SM/AD
2018	2001	1	Iron	Nail fragment	10/04/2015	SM/AD
2019	2001	1	Iron	Square nail	10/04/2015	SM/AD
2020	2001	1	Iron	Nail fragment	10/04/2015	IB
2021	2001	3	Iron	Nail fragments	10/04/2015	MH
2022	2001	4	Glass	gree fragment	10/04/2015	SM/AD
2023	2001	1	Iron	Nail fragments	10/04/2015	SM/AD
2024	2001	1	Iron	Nail fragments	10/04/2015	SM/AD
2025	2001	1	Iron	Nail fragment	10/04/2015	SM/AD
2026	2001	5	Ceramic	Glazed	10/04/2015	SM/AD
2027	2001	1	Iron	Nail fragments	10/04/2015	SM/AD
2028	2001	1	Iron	Nail	13/04/2015	IB/SM
2029	2001	1	Glass	Dark green fragment	13/04/2015	IB/SM
2030	2001	3	Iron	Nails	13/04/2015	IB/SM
2031	2001	4	Iron	Nail	13/04/2015	IB/SM
2032	2001	2	Iron	Nail	13/04/2015	IB/SM
2033	2001	2	Iron	Nail fragments	13/04/2015	IB/SM
2034	2001	1	Iron	Nail fragments	13/04/2015	IB/SM
2035	2001	1	Iron	shotgun cartridge casing	13/04/2015	IB/SM
2036	2001	7	Iron	Nail fragments	13/04/2015	IB/SM
2037	2001	1	Iron	Nail fragments	13/04/2015	IB/SM
2038	2001	4	Iron	Nail fragments	13/04/2015	IB/SM
2039	2001	3	Iron	Nail	13/04/2015	IB/SM
2040	2001	1	Iron	Nail	13/04/2015	IB/SM
2041	2001	1	Iron	Nails	13/04/2015	IB/SM
2042	2001	2	Iron	Nail fragment	13/04/2015	IB/SM
2043	2001	4	Iron	Nail	13/04/2015	IB/SM
2044	2001	1	Iron	bottle top	13/04/2015	IB/SM

2045	2001	3	Iron	cartridge cap	13/04/2015	IB/SM
2046	2001	3	Iron	Nail & fragments	13/04/2015	IB/SM
2047	2001	2	Iron	Nail fragments	13/04/2015	IB/SM
2048	2001	2	Iron	Nails	13/04/2015	IB/SM
2049	2001	2	Iron	Nail fragments	13/04/2015	IB/SM
2050	2001	1	Iron	Nail & fragments	13/04/2015	IB/SM
2051	2001	2	Iron	Nail fragments	13/04/2015	IB/SM
2052	2001	1	Iron	Nail fragment	13/04/2015	IB/SM
2053	2001	1	Iron	Nail fragment	13/04/2015	IB/SM
2054	2001	1	Iron	Nail fragments	13/04/2015	IB/SM
2055	2001	3	Iron	Nail	13/04/2015	IB/SM
2056	2001	4	Iron	Nail fragments	13/04/2015	IB/SM
2057	2001	3	Iron	Nail & fragments	13/04/2015	IB/SM
2058	2001	3	Iron	Nails	13/04/2015	IB/SM
2059	2001	3	Iron	Nails	13/04/2015	IB/SM
2060	2001	5	Iron	Nail	13/04/2015	IB/SM
2061	2001	7	Iron	fragment	13/04/2015	IB/SM
2062	2001	2	Glass	green fragment	14/04/2015	IB/SM
2063	2001	1	Iron	Nails & fragment	14/04/2015	IB/SM
2064	2001	2	Iron	Nail	14/04/2015	IB/SM
2065	2001	3	Iron	Nail	14/04/2015	IB/SM
2066	2001	1	Iron	Nails	14/04/2015	IB/SM
2067	2001	3	Iron	Nail & fragment	14/04/2015	IB/SM
2068	2001	3	Iron	Nails	14/04/2015	IB/SM
2069	2001	3	Iron	Nail	14/04/2015	IB/SM
2070	2001	2	Iron	Nails & fragment	14/04/2015	IB/SM
2071	2001	1	Iron	Nail & fragments	14/04/2015	IB/SM
2072	2001	1	Iron	Nail	14/04/2015	IB/SM
2073	2001	1	Glass	green fragment	14/04/2015	IB/SM
2074	2001	1	Iron	Nails & fragments	14/04/2015	IB/SM
2075	2001	3	Iron	Nail & fragments	14/04/2015	IB/SM
2076	2001	1	Iron	Nail fragments	14/04/2015	IB/SM
2077	2001	1	Iron	Nail fragments	14/04/2015	IB/SM
2078	2001	2	Iron	Nail	14/04/2015	IB/SM
2079	2001	2	Iron	Nail fragments	14/04/2015	IB/SM
2080	2001	2	Iron	Nail fragment	14/04/2015	IB/SM
2081	2001	1	Iron	Nail fragment	14/04/2015	IB/SM
2082	2001	3	Iron	Nail	14/04/2015	IB/SM
2083	2001	5	Iron	nail	14/04/2015	IB/SM
2084	2001	1	Iron	nail	14/04/2015	IB/SM
2085	2001	1	Iron	Iron summerhouse fitting no.3	14/04/2015	IB/SM
2086	2001	1	Iron	nail	14/04/2015	IB/SM
2087	2001	1	Iron	Nail	15/04/2015	JK/IM
2088	2001	3	Iron	Nails & fragment	15/04/2015	JK/IM
2089	2001	1	Glass	green fragment	15/04/2015	JK/IM

2090	2001	2	?	possible ceramic	15/04/2015	JK/IM
2091	2001	2	Iron	Nail & fragment	15/04/2015	JK/IM
2092	2001	1	flint	burnt?	15/04/2015	JK/IM
2093	2001	1	Iron	Nail & fragment	15/04/2015	JK/IM
2094	2001	3	Iron	fragment	15/04/2015	JK/IM
2095	2001	3	Glass	fragment	15/04/2015	JK/IM
2096	2001	1	Iron	Nail	15/04/2015	JK/IM
2097	2001	2	Iron	Nails & fragment	15/04/2015	JK/IM
2098	2001	1	Iron	Nails & fragments	15/04/2015	JK/IM
2099	2001	1	Glass	green fragment	15/04/2015	JK/IM
2104	2001	1	Iron	Nails & fragments	15/04/2015	JK/IM
2105	2001	3	Iron	Nails	15/04/2015	JK/IM
2106	2001	2	Iron	Nails	15/04/2015	JK/IM
2107	2001	2	Iron	Nail & fragment	16/04/2015	AH/JM
2108	2001	2	Iron	Nails & fragments	16/04/2015	AH/JM
2109	2004	4	Iron	fragment	16/04/2015	YM/AH
2110	2001	2	Iron	Nails	16/04/2015	YM/AH
2111	2004	1	Glass	green fragment	16/04/2015	IP
2112	2004	1	Iron	Nail & fragment	16/04/2015	AH
2113	2004	3	Iron	Nails & fragment	16/04/2015	AH
2114	2004	1	Iron	Nails	17/04/2015	JK
2115	2004	8	Iron	Nails	17/04/2015	JK
2116	2004	1	Glass	Brown fragment	17/04/2015	JK
2117	2004	1	Glass	green fragment	17/04/2015	JK
2118	2004	27	Iron	Nails and fragments	17/04/2015	JK
2119	2004	4	Iron	nails	17/04/2015	AD
2120	2001	1	Metal	bottle top	13/04/2015	IB/SM
2121	2004	8	Iron	nails	16/04/2015	IP
2122	2001	18	iron	nails	16/04/2015	IP
2123	2001	6	iron	nails	16/04/2015	JK
2124	2001	1	glass	amber, fragment	09/04/2015	IP
2125	2004	10	iron	nails	16/04/2015	IP
2126	2001	7	iron	nails	14/04/2015	IB/SM
2127	2001	2	iron	nails	09/04/2015	IP
2128	2001	1	Ceramic	white, glazed	10/04/2015	SM/AD
2129	2001	9	Iron	nails	16/04/2015	JK
2130	2001	2	Iron	nails	15/04/2015	JK/IM
2131	2001	10	iron	nails	10/04/2015	IB
2132	2001	1	Glass	green, fragment	14/04/2015	IB/SM
2133	2001	2	Iron	nails	16/04/2015	AH/JM
2134	2001	2	Iron	nails	10/04/2015	SM/AD
2135	2001	1	Glass	Green glass bottle sherd	10/04/2015	SM/AD
2136	2001	63	Iron	nails	10/04/2015	
2137	2001	2	Glass	Green glass sherd	13/04/2015	IB/SM
2138	2001	1	Glass	Green glass sherd	14/04/2015	IB/SM

2139	2001	1	Glass	Green glass sherd	14/04/2015	IB/SM
2140	2001	1	Glass	Glass sherd	14/04/2015	IB/SM
2141	2001	1	Ceramic	black, glaze?	14/04/2015	IB/SM
2142	2001	1	Glass	Glass sherd	15/04/2015	JK/IM
2143	2001	3	Iron	nails+ metal fragments	15/04/2015	JK/IM
2144	2001	12	Iron	nails+ metal fragments	15/04/2015	JK/IM
2145	2004	3	Iron	nails	16/04/2015	AH/JM
2146	2004	1	Glass	Glass sherd, clear	16/04/2015	AH/JM
2147	2004	2	Iron	nails	16/04/2015	IP
2148	2004	19	iron	nails	16/04/2015	IP
2149	2004	1	Glass	green glass sherd	17/04/2015	JK
2150	2004	1	iron	nail	17/04/2015	JK
2151	2001	3	iron	nail	09/04/2015	IP
2152	2001	4	Glass & Pottery	sherds	09/04/2015	SM
2153	2001	1	Iron	nail		
2154	2001	1	Ceramic	white, glazed		
2156	2001	4	Glass	clear & green fragments		
2157	2001	2	Ceramic	white, glazed		
2158	2001	3	Iron	cartridge cap, nail fragments		
2160	2001	2	Ceramic	white, glazed		
2161	2001	2	Ceramic	white, glazed		
2165	2001	2	Ceramic	white, glazed		
2168	2001	2	Plastic	Pink Panther bunting	09/04/2015	IP
2169	2001	1	Iron	bottle top		

7.3 Drawings

7.3.1 Trench A

Drawing	Subject	Description	Scale	Type	Initials	Date
001	1010, 1015	Plan of outer bank and ditch Trench A, pt.1	1:20	Plan	AB/LMc	03/04/2015
002	1010- 1012	Plan of outer bank and ditch Trench A, pt.2	1:20	Plan	AB/LMc	03/04/2015
003	1013	N-facing slope of outer bank, pt.1	1:20	Plan	MH	03/04/2015
004	1013, 1014	N-facing slope of outer bank, pt.2	1:20	Plan	SH	03/04/2015
005	1018, 1019, 1022, 1023	Plan of possible stone setting on top of outer bank, pt.1	1:20	Plan	CWS	03/04/2015
006	1020, 1022	Plan of possible stone setting on top of outer bank, pt.2	1:20	Plan	MR	03/04/2015
007	1022, 1024	Pre-excavation plan of summit area, inner bank	1:20	Plan	CMAC	04/04/2015
008	1003, 1025	Pre-excavation plan of S-facing slope of inner bank	1:20	Plan	CMAC	04/04/2015
009	1009, 1025	Pre-excavation plan of base of the inner bank	1:20	Plan	CMAC	04/04/2015
010	1008, 1009, 1026	Pre-excavation plan of middle bank	1:20	Plan	CMAC	04/04/2015
011	1007, 1006	Pre-excavation plan of middle bank and base of outer bank	1:20	Plan	CMAC	04/04/2015

012	1012, 1014, 1030	Plan of 2m sondage on N face of outer bank	1:20	Plan	OC	09/04/2015
013	1023, 1035	Plan of inner bank on summit, pt. 1	1:20	Plan	CS	11/04/2015
014	1023, 1035	Plan of inner bank on summit, pt. 2	1:20	Plan	CMAC	11/04/2015
015	1042, 1037, 1030, 1051	Plan of middle bank, bottom of the trench, showing exposed bedrock	1:20	Plan	PL	15/04/2015
016	1042, 1043, 1049, 1007	E-facing section of pit [1051]	1:20	Section	PL	16/04/2015
017	1010, 1011, 1039, 1056, 1057, 1052	E-facing section of outer ditch	1:20	Section	LMc	16/04/2015
018	1040, 1041, 1042	E-facing section of middle bank	1:20	Section	SH	16/04/2015
019	1010, 1011, 1039, 1058, 1057, 1052	W-facing section of outer ditch	1:20	Section	LMc	16/04/2015
020	1008, 1007, 1042, 1009, 1005, 1041	W-facing section of middle bank	1:20	Section	SH	17/04/2015
021	1027, 1055, 1050, 1030, 1062, 1012, 1013	W-facing section of outer bank	1:20	Section	LMc	17/04/2015
022	1005, 1009, 1042, 1026, 1034	W-facing section of N end of middle bank	1:20	Section	PL	17/04/2015
023	1052	Plan of outer ditch	1:20	Plan	LMc	17/04/2015
024	1052, 1061, 1055	Post-excavation plan of base of outer bank	1:20	Plan	TIP	17/04/2015
025	1022, 1023, 1020, 1017, 1024	W-facing section of trench - first 10m from top	1:20	Section	JM/LT	17/04/2015
026	1001, 1031, 1032, 1025, 1038, 1005	W-facing section of trench - next 5m after drawing 025	1:20	Section	JM/LT	17/04/2015
027	1004, 1036	Plan of charcoal rich feature on summit of the hill	1:20	Plan	CMAC	17/04/2015
028	1036	Plan of charcoal rich feature on summit of the hill, pt. 2	1:20	Plan	CMAC	17/04/2015
029	bedrock	Post-excavation plan of bedrock ledges below summit	1:20	Plan	CMAC	17/04/2015
030	bedrock	Post-excavation plan of middle bank	1:20	Plan	CMAC	17/04/2015
031	1063	W-facing section of cut 1063	1:20	Section	TIP	17/04/2015

7.3.2 Trench B

Drawing	Subject	Description	Scale	Type	Initials	Date
2001		Pre-excavation plan of Trench B (East)	1:20	Plan	AD	14/04/2015
2002	2004, 2005	N-facing section of sondage A	1:10	Section	JK	17/04/2015
2003	2002, 2004, 2003	E-facing section of sondage B	1:10	Section	YM	17/04/2015
2004		Pre-excavation plan of Trench B (West)	1:20	Plan	AD	17/04/2015
2005	2002, 2004, 2005	W-facing section of sondage B	1:10	Section	YM	17/04/2015
2006	2002, 2004, 2005	Post-excavation plan of Trench B showing sondages A & B	1:20	Plan	AD	17/04/2015

7.4 Samples

7.4.1 Trench A

Sample	Context	Size	Material	Reason for sample	Initials	Date
001	1007	10L	Slumped bank material middle bank	ID of botanics, comparsion	SH	09/04/2015
002	1006	10L	Hillwash in between outer and middle banks	ID of botanics, comparsion	SH	09/04/2015
003	1024	1L	Clay in summit area	ID of soil comparsion	TIP	09/04/2015
004	1011	5L	Slumped bank material outer bank	ID of botanics, comparsion	SK	09/04/2015
005	1011	5L	Slumped bank material outer bank	ID of botanics, comparsion	TIP/SK	09/04/2015
007	1011	5L	Slumped bank material outer bank	ID of botanics, comparsion	TIP/SK	10/04/2015
008	1039	10L	Dark layer with stones in ditch	ID of botanics, comparsion	SK	11/04/2015
009	1038	2L	Soil above bedrock on slope below summit	ID of botanics, comparsion	CMAC	11/04/2015
011	1029	5L	Loose soil with stones in middle bank	ID of botanics, comparsion	AD	13/04/2015
012	1034	5L	Reddish brown layer with charcoal flecks	ID of botanics, comparsion	CMAC	13/04/2015
013	1020	5L	Brown soil between stones on summit	ID of botanics, comparsion	CMAC	13/04/2015
014	1022	10L	Clayey silt in inner bank	ID of botanics, comparsion	CMAC	13/04/2015
015	1036	5L	Dark black brown silt on summit	ID of botanics, comparsion	CMAC	13/04/2015
016	1045	2L	pinkish stoney layer, possible natural under putative counterscarp	ID of botanics, comparsion	SK	13/04/2015
017	1043	10L	Fill of rock cut pit 1051	ID of botanics, comparsion	AD	13/04/2015
018	1044	5L	Fill of rock cut pit 1063	ID of botanics, comparsion	PL	13/04/2015
019	1047	1.5L	Dark spread on S face of outer bank	ID of botanics, comparsion	SMc	13/04/2015
020	1049	10L	Gritty sandy soil in pit 1051	ID of botanics, comparsion	AD	13/04/2015
021	1032	5L	Patch of dark brown black clay directly under break of slope of bedrock on the summit	ID of botanics, comparsion	JMcK	14/04/2015
022	1022	5L	Clayey silt in inner bank	ID of botanics, comparsion	AWB	14/04/2015
023	1049	10L	Dark brown base of pit 1051	ID of botanics, comparsion	AD	14/04/2015
024	1050	10L	Dark brown, silty sand base of outer banks	ID of botanics, comparsion	SK	14/04/2015
025	1042	10L	Light brown silty clay, possible natural above bedrock under middle bank	ID of botanics, comparsion	AD	14/04/2015
026	1053	5L	Fill of palisade	ID of botanics, comparsion	SMc	14/04/2015
027	1036	5L	Dark black brown silty and ashy layer on summit	ID of botanics, comparsion	JMcK	15/04/2015
028	1054	5L	Spread of material washed into or accumulated within cervices of the bedrock	ID of botanics, comparsion	AMcK	15/04/2015

029	1032	10L	Patch of dark brown black clay directly under break of slope of bedrock on the summit	ID of botanics, comparsion	JMcK	15/04/2015
030	1022	10L	Clayey silt in inner bank	ID of botanics, comparsion	CS	16/04/2015
031	1032	10l	Patch of dark brown black clay directly under break of slope of bedrock on the summit	ID of botanics, comparsion	CS	16/04/2015
032	1056	5L	Pocket of material under large stone in ditch	ID of botanics, comparsion	TIP/SK	16/04/2015
033	1060	10L	Fill and stone settings for the palisade	ID of botanics, comparsion	TIP	16/04/2015
035	1064	4L	Heat affected soil on summit	ID of botanics, comparsion	CMAC	17/04/2015
036	1055	8L	Possible old 'B' horizon or redeposited material overlying glacial till & bedrock	ID of botanics, comparsion	SMc	17/04/2015
K1	1057, 1039		Outer ditch	Micromorphology analysis and thin section	GP	17/04/2015
K2	1057		Outer ditch	Micromorphology analysis and thin section	GP	17/04/2015
K3	1039		Outer ditch	Micromorphology analysis and thin section	GP	17/04/2015
K4			Outer ditch	Micromorphology analysis and thin section	GP	17/04/2015
K6	1041		Rock cut pit 1051	Micromorphology analysis and thin section	GP	17/04/2015
K7	1041, 1042		Rock cut pit 1051	Micromorphology analysis and thin section	GP	17/04/2015
K8	1042		Rock cut pit 1051	Micromorphology analysis and thin section	GP	17/04/2015
K9	1012		Outer bank	Micromorphology analysis and thin section	GP	17/04/2015
K10	1062		Outer bank	Micromorphology analysis and thin section	GP	17/04/2015
K11	1030		Outer bank	Micromorphology analysis and thin section	GP	17/04/2015
K12	1050		Outer bank	Micromorphology analysis and thin section	GP	17/04/2015
K13	1050, 1055		Outer bank	Micromorphology analysis and thin section	GP	17/04/2015
K14	1055		Outer bank	Micromorphology analysis and thin section	GP	17/04/2015
K15	1050, 1055		Outer bank	Micromorphology analysis and thin section	GP	17/04/2015
K16	1050		Outer bank	Micromorphology analysis and thin section	GP	17/04/2015
K17	1022, 1036		Summit bank and feature	Micromorphology analysis and thin section	GP	17/04/2015
K18	1036		Summit bank and feature	Micromorphology analysis and thin section	GP	17/04/2015

7.4.2 Trench B

Sample	Context	Size	Material	Reason for sample	Initials	Date
2001	2001	5L	Topsoil	ID of botanics and for comparison with other contexts	AD	13/04/2015
2002	2001	5L	Topsoil with charcoal	ID of botanics and for comparison with other contexts	IP	16/04/2015
2003	2001	5L	Topsoil with large fragment of charcoal	ID of botanics and for comparison with other contexts	IP	16/04/2015
2004	2004	5L	Silt with chipped stone	ID of botanics and for comparison with other contexts	IP	16/04/2015
2005	2003	3L	Possible track material	ID of botanics and for comparison with other contexts	IB	17/04/2015

7.5 Photographs

Photo	Area	Context	Description	Taken from	Initials	Date
IMG_4537	A	Outer bank	South slope of outer bank	S	KP	30/03/2015
IMG_4538	A	Outer bank	South slope of outer bank	S	KP	30/03/2015
IMG_4539	A	Outer bank and ditch	South slope of outer bank and ditch	S	KP	30/03/2015
IMG_4540	A	Outer bank and ditch	South slope of outer bank and ditch	S	KP	30/03/2015
IMG_4541	A	Outer slope of outer ditch	North facing slope facing outer bank	N	KP	30/03/2015
IMG_4542	A	Outer slope of outer ditch	North facing slope facing outer bank	N	KP	30/03/2015
IMG_4543	A	Outer ditch	North facing slope and outer ditch	E	KP	30/03/2015
IMG_4544	A	Outer bank	South slope of outer bank	SE	KP	30/03/2015
IMG_4545	A	Outer bank	North slope of outer bank	N	AD	30/03/2015
IMG_4546	A	Outer bank	North slope of outer bank	N	AD	30/03/2015
IMG_4547	A	Middle bank	South side - Middle bank	S	AD	30/03/2015
IMG_4548	A	Middle bank	South side - Middle bank	S	AD	30/03/2015
IMG_4549	A	Middle bank	North side - Middle bank	N	AD	30/03/2015
IMG_4550	A	Middle bank	North side - Middle bank	N	AD	30/03/2015
IMG_4551	A		Stone setting at top of site	E	SH	30/03/2015
IMG_4552	A		Stone setting at top of site	E	SH	30/03/2015
IMG_4553	A		Stone setting at top of site	E	SH	30/03/2015
IMG_4554	A		Stone setting at top of site	E	SH	30/03/2015
IMG_4555	A		Stone setting at top of site	W	SH	30/03/2015
IMG_4556	A		Stone setting at top of site	W	SH	30/03/2015
IMG_4557	A		Stone setting at top of site	W	SH	30/03/2015
IMG_4558	A		Stone setting at top of site	W	SH	30/03/2015
IMG_4559	A		Lower slope of inner bank	S	CMAL	30/03/2015
IMG_4560	A		Lower slope of inner bank	S	CMAL	30/03/2015
IMG_4561	A		Lower slope of inner bank	S	CMAL	30/03/2015
IMG_4562	A		Stone spread - upper bank/enclosure	E	TP	31/03/2015

IMG_4563	A		Stone spread - upper bank/enclosure	E	TP	31/03/2015
IMG_4564	A		Stone spread - upper bank/enclosure	E	TP	31/03/2015
IMG_4565	A		Stone spread - upper bank/enclosure	E	TP	31/03/2015
IMG_4566	A		Stone spread - upper bank/enclosure	W	TP	31/03/2015
IMG_4567	A		Stone spread - upper bank/enclosure	W	TP	31/03/2015
IMG_4568	A		Working shot	NW	TP	31/03/2015
IMG_4569	A		Outer face of inner bank - topsoil removed	SE	TP	01/04/2015
IMG_4570	A		Outer face of inner bank - topsoil removed	SE	TP	01/04/2015
IMG_4571	A		Outer face of inner bank - topsoil removed	SE	TP	01/04/2015
IMG_4572	A		Outer face of inner bank - topsoil removed	SE	TP	01/04/2015
IMG_4573	A		Outer face of inner bank - topsoil removed	SW	TP	01/04/2015
IMG_4574	A		Outer face of inner bank - topsoil removed	SW	TP	01/04/2015
IMG_4575	A		Outer face of inner bank - topsoil removed	SW	TP	01/04/2015
IMG_4576	A		Outer face of inner bank - topsoil removed	SW	TP	01/04/2015
IMG_4577	A		Outer face of inner bank - topsoil removed	SW	TP	01/04/2015
IMG_4578	A		Outer face of inner bank - topsoil removed	SW	TP	01/04/2015
IMG_4579	A	1008 + 1009	North face middle bank	N	AD	01/04/2015
IMG_4580	A	1008 + 1009	North face middle bank	N	AD	01/04/2015
IMG_4581	A	1006, 1007, 1008	South facing middle bank	S	AD	01/04/2015
IMG_4582	A	1006, 1007, 1009	South facing middle bank	S	AD	01/04/2015
IMG_4583	A	1010, 1011, 1012	South facing outer bank (E sondage)	S	KP	01/04/2015
IMG_4584	A	1010, 1011, 1013	South facing outer bank (E sondage)	S	KP	01/04/2015
IMG_4585	A	1012 + 1013	North facing outer bank (E sondage)	N	TP	01/04/2015
IMG_4586	A	1013 + 1013	North facing outer bank (E sondage)	N	TP	01/04/2015
IMG_4587	A	1010, 1011, 1012	South facing outer bank (W sondage)	S	TP	01/04/2015
IMG_4588	A	1010, 1011, 1013	South facing outer bank (W sondage)	S	TP	01/04/2015
IMG_4589	A	1015	North facing counter scarp	N	TP	01/04/2015
IMG_4590	A	1015	North facing counter scarp	N	TP	01/04/2015
IMG_4591	A		Working shot of top (North end of trench)	SE	TP	01/04/2015
IMG_4592	A		Working shot of top (North end of trench)	SE	TP	01/04/2015
IMG_4593	A		Working shot of top (North end of trench)	SE	TP	01/04/2015
IMG_4594	A	1012, 1011, 1010	S-facing slope of outer bank (after cleaning)	S	TP	03/04/2015
IMG_4595	A	1012, 1011, 1010	S-facing slope of outer bank (after cleaning)	S	TP	03/04/2015
IMG_4596	A	1012, 1011, 1010	S-facing slope of outer bank (after cleaning)	S	TP	03/04/2015
IMG_4597	A	1012, 1011, 1010	S-facing slope of outer bank (after cleaning)	S	TP	03/04/2015
IMG_4598	A	1012, 1011, 1010	S-facing slope of outer bank (after cleaning)	S	TP	03/04/2015
IMG_4599	A	1012, 1011, 1010	S-facing slope of outer bank (after cleaning)	S	TP	03/04/2015
IMG_4600	A		Mid bank with (1007) + (1008) removed	S	PL	03/04/2015
IMG_4601	A	1012, 1027, 1006	N-facing slope of outer bank after cleaning	N	TP	03/04/2015

IMG_4602	A	1012, 1027, 1007	N-facing slope of outer bank after cleaning	N	TP	03/04/2015
IMG_4603	A	1012, 1027, 1008	N-facing slope of outer bank after cleaning	N	TP	03/04/2015
IMG_4604	A	1012, 1027, 1009	N-facing slope of outer bank after cleaning	N	TP	03/04/2015
IMG_4605	A	1012, 1027, 1010	N-facing slope of outer bank after cleaning	N	TP	03/04/2015
IMG_4606	A	1018, 1019, 1020, 1021, 1022, 2023	N end of trench topsoil + upper material removed	N	TP	03/04/2015
IMG_4607	A	1018, 1019, 1020, 1021, 1022, 2023	N end of trench topsoil + upper material removed	N	TP	03/04/2015
IMG_4608	A	1018, 1019, 1020, 1021, 1022, 2023	N end of trench topsoil + upper material removed	N	TP	03/04/2015
IMG_4609	A	1018, 1019, 1020, 1021, 1022, 2023	Working shot	N	TP	03/04/2015
IMG_4610	A	1018, 1019, 1020, 1021, 1022, 2023	Working shot	N	TP	03/04/2015
IMG_4611	A	1025	S-face of inner bank	S	TP	04/04/2015
IMG_4612	A	1025	S-face of inner bank	S	TP	04/04/2015
IMG_4613	A	1025	S-face of inner bank	S	TP	04/04/2015
IMG_4614	A	1025	S-face of inner bank	S	TP	04/04/2015
IMG_4615	A	1025	S-face of inner bank	S	TP	04/04/2015
IMG_4616	A		S-face of middle bank	S	PL	07/04/2015
IMG_4617	A		1013 being removed on N face of outer bank	N	TP	07/04/2015
IMG_4618	A		1014 being removed on N face of outer bank	N	TP	07/04/2015
IMG_4619	A		1015 being removed on N face of outer bank	N	TP	07/04/2015
IMG_4620	A		Working shot		TP	07/04/2015
IMG_4621	A		Working shot		TP	07/04/2015
IMG_4622	A		Working shot		TP	07/04/2015
IMG_4623	A		Alex working revealing flat stones on N end of trench		TP	07/04/2015
IMG_4624	A		Alex working revealing flat stones on N end of trench		TP	07/04/2015
IMG_4625	A		Alex working revealing flat stones on N end of trench		TP	07/04/2015
IMG_4626	A		Alex working revealing flat stones on N end of trench		TP	07/04/2015
IMG_4627	A		Alex working revealing flat stones on N end of trench		TP	07/04/2015
IMG_4628	A	1011	1012 removed onto more solid clayey material - S face of outer bank	S	TP	07/04/2015
IMG_4629	A		1012 removed onto more solid clayey material - S face of outer bank	S	TP	07/04/2015
IMG_4630	A		1012 removed onto more solid clayey material - S face of outer bank	S	TP	07/04/2015
IMG_4631	A		1012 removed onto more solid clayey material - S face of outer bank + trench	S	TP	07/04/2015
IMG_4632	A		1012 removed onto more solid clayey material - S face of outer bank + trench	S	TP	07/04/2015
IMG_4633	A		Removal of 1011 near base of S face of bank on to reddish	S	TP	08/04/2015
IMG_4634	A		Removal of 1011 near base of S face of bank on to reddish	S	TP	08/04/2015

IMG_4635	A		Removal of 1011 near base of S face of bank on to reddish	S	TP	08/04/2015
IMG_4636	A		Removal of 1011 near base of S face of bank on to reddish	S	TP	08/04/2015
IMG_4637	A		Mid ex of 1025 (S face of upperbank)	S	TP	08/04/2015
IMG_4638	A		Mid ex of N face of outer bank	N	TP	08/04/2015
IMG_4639	A		Mid ex of N face of outer bank	N	TP	08/04/2015
IMG_4640	A		Mid ex of N face of outer bank	N	TP	08/04/2015
IMG_4641	A		Cathy	W	TP	08/04/2015
IMG_4642	A		Mid ex of 1025 on top bedrock - S face of inner bank	S	TP	08/04/2015
IMG_4643	A		Mid ex of 1025 on top bedrock - S face of inner bank	S	TP	08/04/2015
IMG_4644	A		Mid ex of 1025 on top bedrock - S face of inner bank	S	TP	08/04/2015
IMG_4645	A		Mid ex of 1025 on top bedrock - S face of inner bank	S	TP	08/04/2015
IMG_4646	A		Mid ex of 1025 on top bedrock - S face of inner bank	S	TP	08/04/2015
IMG_4647	A	1028	Counter scarp removal of 1015 on to 1028	N	TP	08/05/2015
IMG_4648	A	1028	Counter scarp removal of 1015 on to 1029	N	TP	08/04/2015
IMG_4649	A	1028	Counter scarp removal of 1015 on to 1030	N	TP	08/04/2015
IMG_4650	A	1028	Counter scarp removal of 1015 on to 1031	N	TP	08/04/2015
IMG_4651	A		N face of outer bank showing stone cobble pink/red	N	TP	09/04/2015
IMG_4652	A		N face of outer bank showing stone cobble pink/red	N	TP	09/04/2015
IMG_4653	A		N face of outer bank showing stone cobble pink/red	N	TP	09/04/2015
IMG_4654	A		N face of outer bank showing stone cobble pink/red	N	TP	09/04/2015
IMG_4655	A		N face of outer bank showing stone cobble pink/red	N	TP	09/04/2015
IMG_4656	A		Stony layer at top of trench	E	TP	09/04/2015
IMG_4657	A		Stony layer at top of trench	E	TP	09/04/2015
IMG_4658	A		Stony layer at top of trench	E	TP	09/04/2015
IMG_4659	A		Stony layer at top of trench	W	TP	09/04/2015
IMG_4660	A		Stony layer at top of trench	W	TP	09/04/2015
IMG_4661	A		Stony layer at top of trench	W	TP	09/04/2015
IMG_4662	A		Stony layer at top of trench	W	TP	09/04/2015
IMG_4663	A	1014 + 1012	1014 + 1012 on the North facing outer bank	N	TP	10/04/2015
IMG_4666	A		North facing slope of middle bank	N	PL	10/04/2015
IMG_4667	A		North facing slope of middle bank	N	PL	10/04/2015
IMG_4668	A		North facing slope of middle bank	N	PL	10/04/2015
IMG_4669	B		Concentration of iron object in SE part of trench B	N	IB	10/04/2015
IMG_4670	B		Concentration of iron object in SE part of trench B	N	IB	10/04/2015
IMG_4671	B		Working photo of the A-team in trench B	N	IB	10/04/2015
IMG_4672	B		Working photo of the A-team in trench B	N	IB	10/04/2015

IMG_4673	B		Working photo of the A-team in trench B	N	IB	10/04/2015
IMG_4674	A	1029	North facing slope of middle bank	N	PL	10/04/2015
IMG_4675	A	1029	North facing slope of middle bank	N	PL	10/04/2015
IMG_4676	A	1029	North facing slope of middle bank	N	PL	10/04/2015
IMG_4677	A		North facing slope of outer bank	N	TP	10/04/2015
IMG_4678	A		North facing slope of outer bank	N	TP	10/04/2015
IMG_4679	A		North facing slope of outer bank	N	TP	10/04/2015
IMG_4680	A		South facing slope of outer bank	S	TP	10/04/2015
IMG_4681	A		South facing slope of outer bank	S	TP	10/04/2015
IMG_4682	A		South facing slope of outer bank	S	TP	10/04/2015
IMG_4683	A		South facing slope of outer bank	S	TP	10/04/2015
IMG_4684	A	1035	N end of trench (bank and stones)	W	TP	11/04/2015
IMG_4685	A	1035	N end of trench (bank and stones)	W	TP	11/04/2015
IMG_4686	A	1035	N end of trench (bank and stones)	W	TP	11/04/2015
IMG_4687	A	1035	N end of trench (bank and stones)	W	TP	11/04/2015
IMG_4688	A	1035	N end of trench (bank and stones)	W	TP	11/04/2015
IMG_4689	A	1035	N end of trench (bank and stones)	N	TP	11/04/2015
IMG_4690	A	1035	N end of trench (bank and stones)	N	TP	11/04/2015
IMG_4691	A	1035	N end of trench (bank and stones)	N	TP	11/04/2015
IMG_4692	A	1035	N end of trench (bank and stones)	N	TP	11/04/2015
IMG_4693	A	1035	N end of trench (bank and stones)	E	TP	11/04/2015
IMG_4694	A	1035	N end of trench (bank and stones)	E	TP	11/04/2015
IMG_4695	A	1035	N end of trench (bank and stones)	E	TP	11/04/2015
IMG_4696	A	1039	Base of ditch S end of trench (S face of outer bank)	S	TP	11/04/2015
IMG_4697	A	1039	Base of ditch S end of trench (S face of outer bank)	S	TP	11/04/2015
IMG_4698	A	1039	Base of ditch S end of trench (S face of outer bank)	S	TP	11/04/2015
IMG_4699	A	1010, 1011, 1015	Ditch outer section - W facing	W	TP	11/04/2015
IMG_4700	A	1010, 1011, 1015	Ditch outer section - W facing	W	TP	11/04/2015
IMG_4701	A	1010, 1011, 1015	Ditch outer section - W facing	W	TP	11/04/2015
IMG_4702	A	1010, 1011, 1015	Ditch outer section - W facing	W	TP	11/04/2015
IMG_4703	A	1010, 1011, 1015	Ditch outer section - W facing	W	TP	11/04/2015
IMG_4704	A	1010, 1011, 1015	Ditch outer section - W facing	W	TP	11/04/2015
IMG_4705	A		People and rainbow over Ogle	SW	TP	11/04/2015
IMG_4706	A		People and rainbow over Ogle	SW	TP	11/04/2015
IMG_4707	A		People and rainbow over Ogle	SW	TP	11/04/2015
IMG_4708	A		People and rainbow over Ogle	SW	TP	11/04/2015
IMG_4709	A		Rainbow over Ogle	SW	TP	11/04/2015
IMG_4710	A	1014	Top of cobbles + pink in N facing outer bank	N	TP	11/04/2015
IMG_4711	A	1014	Top of cobbles + pink in N facing outer bank	N	TP	11/04/2015
IMG_4712	A	1014	Top of cobbles + pink in N facing outer bank	N	TP	11/04/2015
IMG_4713	A	1014	Top of cobbles + pink in N facing outer bank	N	TP	11/04/2015
IMG_4714	A		Sarah digging ditch	S	TP	11/04/2015
IMG_4715	A		Sarah digging ditch	S	TP	11/04/2015
IMG_4716	A		Cathy + bedrock	E	TP	11/04/2015
IMG_4717	A		Cathy + bedrock	E	TP	11/04/2015
IMG_4718	A		working shots	N	TP	11/04/2015
IMG_4719	A		working shots	N	TP	11/04/2015
IMG_4720	A		working shots	N	TP	11/04/2015

IMG_4721	A		View from ditch	S	TP	11/04/2015
IMG_4722	A		View from ditch	S	TP	11/04/2015
IMG_4723	A		Alans digging	N	TP	11/04/2015
IMG_4724	A		Alans digging	N	TP	11/04/2015
IMG_4725	A	1030	Top of pink in outer bank	N	TP	12/04/2015
IMG_4726	A	1030	Top of pink in outer bank	N	TP	12/04/2015
IMG_4727	A	1030	Top of pink in outer bank	N	TP	12/04/2015
IMG_4728	A	1030	Top of pink in outer bank	N	TP	12/04/2015
IMG_4729	A	1052, 1010, 1011, 1039,	W facing section of outer ditch	W	TP	12/04/2015
IMG_4730	A	1052, 1010, 1011, 1039,	W facing section of outer ditch	W	TP	12/04/2015
IMG_4731	A	1052, 1010, 1011, 1039,	W facing section of outer ditch	W	TP	12/04/2015
IMG_4732	A	1052, 1010, 1011, 1039,	W facing section of outer ditch	W	TP	12/04/2015
IMG_4733	A	1052	Base and cut of outer ditch	N	TP	12/04/2015
IMG_4734	A	1052	Base and cut of outer ditch	N	TP	12/04/2015
IMG_4735	A	1052	Base and cut of outer ditch	N	TP	12/04/2015
IMG_4736	A	1052	Base and cut of outer ditch	N	TP	12/04/2015
IMG_4737	A	1052	Base and cut of outer ditch	N	TP	12/04/2015
IMG_4738	A	1052	Base and cut of outer ditch	N	TP	12/04/2015
IMG_4739	A	1052	Base and cut of outer ditch	N	TP	12/04/2015
IMG_4740	A	1052	Base and cut of outer ditch	N	TP	12/04/2015
IMG_4741	A	1052	Base and cut of outer ditch	N	TP	12/04/2015
IMG_4742	A	1052	Base and cut of outer ditch	N	TP	12/04/2015
IMG_4743	A	1052	Cut and base of outer ditch	N	TP	12/04/2015
IMG_4744	A	1052, 1010, 1011, 1039,	W facing section of outer ditch	W	TP	12/04/2015
IMG_4745	A	1052, 1010, 1011, 1039,	W facing section of outer ditch	W	TP	12/04/2015
IMG_4746	A	1052, 1010, 1011, 1039,	W facing section of outer ditch	W	TP	12/04/2015
IMG_4747	A	1052, 1010, 1011, 1039,	W facing section of outer ditch	W	TP	12/04/2015
IMG_4748	A	1052, 1010, 1011, 1039,	E facing section of outer ditch	E	TP	12/04/2015
IMG_4749	A	1052, 1010, 1011, 1039,	E facing section of outer ditch	E	TP	12/04/2015
IMG_4750	A	1052, 1010, 1011, 1039,	E facing section of outer ditch	E	TP	12/04/2015
IMG_4751	A	1052, 1010, 1011, 1039,	E facing section of outer ditch	E	TP	12/04/2015
IMG_4752	A	1052, 1010, 1011, 1039,	E facing section of outer ditch	S	TP	12/04/2015
IMG_4753	A	1052	Cut and base of outer ditch	S	TP	12/04/2015
IMG_4754	A	1052	Cut and base of outer ditch	S	TP	12/04/2015
IMG_4755	A	1052	Cut and base of outer ditch	S	TP	12/04/2015
IMG_4756	A	1052	Cut and base of outer ditch	S	TP	12/04/2015
IMG_4757	A	1052	Cut and base of outer ditch	S	TP	12/04/2015
IMG_4758	A	1052	Cut and base of outer ditch	S	TP	12/04/2015
IMG_4759	A	1052	Cut and base of outer ditch	S	TP	12/04/2015
IMG_4760	A	1052	Cut and base of outer ditch	S	TP	12/04/2015
IMG_4761	A	1052	Cut and base of outer ditch	S	TP	12/04/2015
IMG_4762	A	1029 + 1042	1029 + 1042 Middle of bank - S facing	S	AD	13/04/2015
IMG_4763	A	1029 + 1042	1029 + 1042 Middle of bank - S facing	S	AD	13/04/2015

IMG_4764	A		View of summit of Ogle Hill from ridge	S	TP	13/04/2015
IMG_4765	A		View of summit of Ogle Hill from ridge	S	TP	13/04/2015
IMG_4766	A		View of summit of Ogle Hill from ridge	S	TP	13/04/2015
IMG_4767	A		View from ridge	W	TP	13/04/2015
IMG_4768	A		View from ridge	W	TP	13/04/2015
IMG_4769	A		View from ridge	W	TP	13/04/2015
IMG_4770	A		View of summit of Ogle Hill from ridge	S	TP	13/04/2015
IMG_4771	A		View of summit of Ogle Hill from ridge	S	TP	13/04/2015
IMG_4772	A		View from ridge	E	TP	13/04/2015
IMG_4773	A		View from ridge	E	TP	13/04/2015
IMG_4774	A		View from ridge	E	TP	13/04/2015
IMG_4775	A		View from ridge	E	TP	13/04/2015
IMG_4776	A		View of summit of Ogle Hill from ridge	S	TP	13/04/2015
IMG_4777	A		View of summit of Ogle Hill from ridge	S	TP	13/04/2015
IMG_4779	A		View from ridge	E	TP	13/04/2015
IMG_4781	A		View from ridge	E	TP	13/04/2015
IMG_4782	A	1043 + 1044	S facing slope of middle bank	S	AD/PL	13/04/2015
IMG_4783	A	1043 + 1044	S facing slope of middle bank	S	AD/PL	13/04/2015
IMG_4784	A	1045	Reddish/pink on counter scarp - 1028 removed	N	TP	13/04/2015
IMG_4785	A	1045	Top of reddish/pink on counter scarp	N	TP	13/04/2015
IMG_4786	A	1045	Top of reddish/pink on counter scarp	N	TP	13/04/2015
IMG_4787	A	1045	Top of reddish/pink on counter scarp	N	TP	13/04/2015
IMG_4788	A	1045	Top of reddish/pink on counter scarp	N	TP	13/04/2015
IMG_4789	A	1045	Top of reddish/pink on counter scarp	E	TP	13/04/2015
IMG_4790	A	1045	Top of reddish/pink on counter scarp	E	TP	13/04/2015
IMG_4791	A	1045	Top of reddish/pink on counter scarp	E	TP	13/04/2015
IMG_4792	A		Working shot	SE	TP	13/04/2015
IMG_4793	A		Working shot	SE	TP	13/04/2015
IMG_4794	A		Working shot	SE	TP	13/04/2015
IMG_4795	A		Working shot	SE	TP	13/04/2015
IMG_4796	A	1004	Stone + chalk soil facing in front of pink - S face of outer bank	S	TP	13/04/2015
IMG_4797	A	1004	Stone + chalk soil facing in front of pink - S face of outer bank	S	TP	13/04/2015
IMG_4798	A	1004	Stone + chalk soil facing in front of pink - S face of outer bank	S	TP	13/04/2015
IMG_4799	A	1004	Stone + chalk soil facing in front of pink - S face of outer bank	S	TP	13/04/2015
IMG_4800	B		Working shot	E	TP	13/04/2015
IMG_4801	B		Working shot	SE	TP	13/04/2015
IMG_4802	B		Working shot	E	TP	
IMG_4803	A	1048	Deposit 1048 middle bank - fill of rock cut pit 1051	E	AD	13/04/2015
IMG_4804	A	1048	Deposit 1048 middle bank - fill of rock cut pit 1051	E	AD	13/04/2015
IMG_4805	A		1045 removed, on to boulder clay (natural) - counter scarp	E	TP	13/04/2015
IMG_4806	A		1045 removed, on to boulder clay (natural) - counter scarp	E	TP	13/04/2015
IMG_4807	A		1045 removed, on to boulder clay (natural) - counter scarp	E	TP	13/04/2015
IMG_4808	A		1045 removed, on to boulder clay (natural) - counter scarp	E	TP	13/04/2015
IMG_4809	A	Bedrock 1026 + 1034	Base of summit slope (mid trench)	S	TP	13/04/2015

IMG_4810	A	Bedrock 1026 + 1034	Base of summit slope (mid trench)	S	TP	13/04/2015
IMG_4811	A	Bedrock 1026 + 1034	Base of summit slope (mid trench)	S	TP	13/04/2015
IMG_4812	A	Bedrock 1026 + 1034	Base of summit slope (mid trench)	S	TP	13/04/2015
IMG_4813	A	Bedrock 1026 + 1034	Base of summit slope (mid trench)	S	TP	13/04/2015
IMG_4815	A	1049	1049 middle bank - fill of rock cut pit 1051	E	AD	14/04/2015
IMG_4816	A	1030 + 1050	N face of outer bank	N	TP	14/04/2015
IMG_4817	A	1030 + 1050	N face of outer bank	N	TP	14/04/2015
IMG_4818	A	1030 + 1050	N face of outer bank	N	TP	14/04/2015
IMG_4819	A	1030 + 1050	N face of outer bank	N	TP	14/04/2015
IMG_4820	A	1051	1051 Half section (E-facing section) rock cut pit 1051	E	AD	14/04/2015
IMG_4821	A	1051	1051 Half section (E-facing section) rock cut pit 1051	E	AD	14/04/2015
IMG_4822	A	1050 + 1030	Spread of dark soil N face outerbank	N	TP	14/04/2015
IMG_4823	A	1050 + 1030	Spread of dark soil N face outerbank	N	TP	14/04/2015
IMG_4824	A	1050 + 1030	Spread of dark soil N face outerbank	E	TP	14/04/2015
IMG_4825	A	1050 + 1030	Spread of dark soil N face outerbank	E	TP	14/04/2015
IMG_4826	A	1050 + 1030	Spread of dark soil N face outerbank	W	TP	14/04/2015
IMG_4827	A	1050 + 1030	Spread of dark soil N face outerbank	W	TP	14/04/2015
IMG_4828	B		Working shot	S/SW	SM	14/04/2015
IMG_4829	B		Working shot	S/SW	SM	14/04/2015
IMG_4830	A	1050 + 1053	Top of dark layer + yellowish layer with charcoal flakes - outer bank	W	TP	14/04/2015
IMG_4831	A	1050 + 1053	Top of dark layer + yellowish layer with charcoal flakes - outer bank	W	TP	14/04/2015
IMG_4832	A	1050 + 1053	Top of dark layer + yellowish layer with charcoal flakes - outer bank	W	TP	14/04/2015
IMG_4833	A		W facing section of outer bank	W	TP	14/04/2015
IMG_4834	A		W facing section of outer bank	W	TP	14/04/2015
IMG_4835	A		W facing section of outer bank	W	TP	14/04/2015
IMG_4836	A	1043, 1048, 1049	E facing section of rock cut pit 1051	E	PL	15/04/2015
IMG_4837	A	1043, 1048, 1049	E facing section of rock cut pit 1051	E	PL	15/04/2015
IMG_4838	A	1043, 1048, 1049	E facing section of rock cut pit 1051	E	PL	15/04/2015
IMG_4839	A	1043, 1048, 1049	E facing section of rock cut pit 1051	E	PL	15/04/2015
IMG_4840	B	2002	Pre-ex shot of 2002 stone facing to stone platform	E	IM	15/04/2015
IMG_4841	B	2002	Pre-ex shot of 2002 stone facing to stone platform	NW	YM	15/04/2015
IMG_4842	B	2002	Pre-ex shot of 2002 stone facing to stone platform	N	YM	15/04/2015
IMG_4843	A	1055, 1060	Top of orange/brown under outer bank + palisade	W	TP	15/04/2015
IMG_4844	A	1055, 1060	Top of orange/brown under outer bank + palisade	W	TP	15/04/2015
IMG_4845	A	1055, 1060	Top of orange/brown under outer bank + palisade	S	TP	15/04/2015
IMG_4846	A	1055, 1060	Top of orange/brown under outer bank + palisade	S	TP	15/04/2015
IMG_4847	A	1055, 1060	Top of orange/brown under outer bank + palisade	S	TP	15/04/2015

IMG_4848	A	1055, 1060	Top of orange/brown under outer bank + palisade	S	TP	15/04/2015
IMG_4849	A		E facing section of outer ditch	E	TP	15/04/2015
IMG_4850	A		E facing section of outer ditch	E	TP	15/04/2015
IMG_4851	A		E facing section of outer ditch	E	TP	15/04/2015
IMG_4852	A		E facing section of outer ditch	E	TP	15/04/2015
IMG_4853	A		E facing section of outer ditch	E	TP	15/04/2015
IMG_4854	A		E facing section of outer ditch	E	TP	15/04/2015
IMG_4855	A		E facing section of outer ditch	E	TP	15/04/2015
IMG_4856	A	1052	Base of outer ditch	S	TP	15/04/2015
IMG_4857	A	1052	Base of outer ditch	S	TP	15/04/2015
IMG_4858	A	1052	Base of outer ditch	S	TP	15/04/2015
IMG_4859	A	1052	Base of outer ditch	S	TP	15/04/2015
IMG_4860	A	1052	Base of outer ditch	S	TP	15/04/2015
IMG_4861	A	1052	Base of outer ditch	S	TP	15/04/2015
IMG_4862	A	1052	Base of outer ditch	S	TP	15/04/2015
IMG_4863	A	1052	Base of outer ditch	S	TP	15/04/2015
IMG_4864	A		W facing section of outer ditch	W	TP	15/04/2015
IMG_4865	A		W facing section of outer ditch	W	TP	15/04/2015
IMG_4866	A		W facing section of outer ditch	W	TP	15/04/2015
IMG_4867	A		W facing section of outer ditch	W	TP	15/04/2015
IMG_4868	A		W facing section of outer ditch	W	TP	15/04/2015
IMG_4869	A		W facing section of outer ditch	W	TP	15/04/2015
IMG_4870	A		W facing section of outer ditch	W	TP	15/04/2015
IMG_4871	A	1022, 1023	Top/inner bank and bedrock	E	TP	15/04/2015
IMG_4872	A	1022, 1023	Top/inner bank and bedrock	E	TP	15/04/2015
IMG_4873	A	1022, 1023, 1036	Top/inner bank and bedrock + black charcoal spread	E	TP	15/04/2015
IMG_4874	A	1022, 1023	Top/inner bank and bedrock	E	TP	15/04/2015
IMG_4875	A	1022, 1023	Top/inner bank and bedrock	E	TP	15/04/2015
IMG_4876	A	1022, 1023	Top/inner bank and bedrock	E	TP	15/04/2015
IMG_4877	A	1022, 1023, 1036	Top/inner bank and bedrock + black charcoal spread	E	TP	15/04/2015
IMG_4878	A	1022, 1023, 1036	Top/inner bank and bedrock + black charcoal spread	E	TP	15/04/2015
IMG_4879	A	1022, 1023, 1036	Top/inner bank and bedrock + black charcoal spread	E	TP	15/04/2015
IMG_4880	A	1022, 1023, 1036	Top/inner bank and bedrock + black charcoal spread	E	TP	15/04/2015
IMG_4881	A	1022, 1023, 1036	Top/inner bank and bedrock + black charcoal spread	E	TP	15/04/2015
IMG_4882	A	1022, 1023, 1036	Top/inner bank and bedrock + black charcoal spread	E	TP	15/04/2015
IMG_4883	A		Bedrock on slope	E	TP	15/04/2015
IMG_4884	A	1022, 1023, 1036	Inner/top bank + black charcoal spread	E	TP	15/04/2015
IMG_4885	A	1022, 1023, 1036	Inner/top bank + black charcoal spread	N	TP	15/04/2015
IMG_4886	A	1022, 1023, 1036	Inner/top bank + black charcoal spread	N	TP	15/04/2015
IMG_4887	A	1022, 1023, 1036	Inner/top bank + black charcoal spread	N	TP	15/04/2015
IMG_4888	A	1022, 1023, 1036	Inner/top bank + black charcoal spread	N	TP	15/04/2015
IMG_4889	A	1022, 1023, 1036	Inner/top bank + black charcoal spread	N	TP	15/04/2015
IMG_4890	A	1022, 1023, 1036	Inner/top bank + black charcoal spread	N	TP	15/04/2015
IMG_4891	A	1022, 1023, 1036	Inner/top bank + black charcoal spread	N	TP	15/04/2015
IMG_4892	A	1022, 1023, 1036	Inner/top bank + black charcoal spread	N	TP	15/04/2015
IMG_4893	A	1022, 1023, 1036	Inner/top bank + black charcoal spread	N	TP	15/04/2015
IMG_4894	A	1022, 1023, 1036	Inner/top bank + black charcoal spread	N	TP	15/04/2015
IMG_4895	A	1022, 1023, 1036	Inner/top bank + black charcoal spread	N	TP	15/04/2015

IMG_4896	A	1022, 1023, 1036	Inner/top bank + black charcoal spread	N	TP	15/04/2015
IMG_4897	A	1022, 1023, 1036	Inner/top bank + black charcoal spread	N	TP	15/04/2015
IMG_4898	A	1022, 1023, 1036	Inner/top bank + black charcoal spread	N	TP	15/04/2015
IMG_4899	B	2129	Shattered glass bottle in situ within charcoal burn layer	N	JK	16/04/2015
IMG_4900	B	2129	Shattered glass bottle in situ within charcoal burn layer	E	JK	16/04/2015
IMG_4901	B	2129	Shattered glass bottle in situ within charcoal burn layer	E	JK	16/04/2015
IMG_4902	A	1007, 1008, 1041, 1042	E-facing section of middle bank	E	TP	16/04/2015
IMG_4903	A	1007, 1008, 1041, 1042	E-facing section of middle bank	E	TP	16/04/2015
IMG_4904	A	1007, 1008, 1041, 1042	E-facing section of middle bank	E	TP	16/04/2015
IMG_4905	A	1007, 1008, 1041, 1042	E-facing section of middle bank	E	TP	16/04/2015
IMG_4906	A	1007, 1008, 1041, 1042	E-facing section of middle bank	E	TP	16/04/2015
IMG_4907	A	1007, 1008, 1041, 1042	E-facing section of middle bank	E	TP	16/04/2015
IMG_4908	A	1008, 1041, 1042, 1009	E-facing section of middle bank	E	TP	16/04/2015
IMG_4909	A	1008, 1041, 1042, 1009	E-facing section of middle bank	E	TP	16/04/2015
IMG_4910	A	1008, 1041, 1042, 1009	E-facing section of middle bank - N end	E	TP	16/04/2015
IMG_4911	A	1008, 1041, 1042, 1009	E-facing section of middle bank - N end	E	TP	16/04/2015
IMG_4912	A	1042, bedrock	Post-excavation of slot through middle bank	N	TP	16/04/2015
IMG_4913	A	1042, bedrock	Post-excavation of slot through middle bank	N	TP	16/04/2015
IMG_4914	A	1042, bedrock	Post-excavation of slot through middle bank	N	TP	16/04/2015
IMG_4915	A	1022, 1023, 1036	Inner/top bank + black charcoal spread	N	TP	16/04/2015
IMG_4916	A	1022, 1023, 1036	Inner/top bank + black charcoal spread	N	TP	16/04/2015
IMG_4917	A	1022, 1023, 1036	Inner/top bank + black charcoal spread	N	TP	16/04/2015
IMG_4918	A	1022, 1023, 1036	Inner/top bank + black charcoal spread	N	TP	16/04/2015
IMG_4919	A		Working shot - Lorraine drawing	NE	TP	16/04/2015
IMG_4920	A		Working shot - Lorraine drawing	NE	TP	16/04/2015
IMG_4921	A		Working shot - Gert		TP	16/04/2015
IMG_4922	A		Working shot - Cathy on total station		TP	16/04/2015
IMG_4923	A		Working shot - Cathy on total station		TP	16/04/2015
IMG_4924	A		Working shot - Alan		TP	16/04/2015
IMG_4925	A	1060	Palisade trench	E	TP	16/04/2015
IMG_4926	A	1060	Palisade trench	E	TP	16/04/2015
IMG_4927	A	1060	Palisade trench	E	TP	16/04/2015
IMG_4928	A	1060	Palisade trench	E	TP	16/04/2015
IMG_4929	A	1060	Palisade trench	E	TP	16/04/2015
IMG_4930	A	1044, 1006, 1055, 1027	W-facing section of N end of outer bank	W	TP	16/04/2015
IMG_4931	A	1044, 1006, 1055, 1027	W-facing section of N end of outer bank	W	TP	16/04/2015
IMG_4932	A	1027, 1055, 1050, 1006, 1014	W-facing section of N end of outer bank	W	TP	16/04/2015

IMG_4933	A	1027, 1055, 1050, 1006, 1014	W-facing section of N end of outer bank	W	TP	16/04/2015
IMG_4934	A	1027, 1055, 1050, 1006, 1014	W-facing section of N end of outer bank	W	TP	16/04/2015
IMG_4935	A	1055, 1050, 1030, 1062, 1012, 1013	W-facing section of outer bank	W	TP	16/04/2015
IMG_4936	A	1055, 1050, 1030, 1062, 1012, 1013	W-facing section of outer bank	W	TP	16/04/2015
IMG_4937	A	1061, 1060, 1055, 1030, 1062, 1011	W-facing section of S end of outer bank	W	TP	16/04/2015
IMG_4938	A	1061, 1060, 1055, 1030, 1062, 1011	W-facing section of S end of outer bank	W	TP	16/04/2015
IMG_4939	A	1061, 1060, 1055, 1030, 1062, 1011	E-facing section of S end of outer bank	E	TP	16/04/2015
IMG_4940	A	1061, 1060, 1055, 1030, 1062, 1011	E-facing section of S end of outer bank	E	TP	16/04/2015
IMG_4941	A	1055, 1050, 1030, 1062, 1012, 1013	E-facing section of N end of outer bank	E	TP	16/04/2015
IMG_4942	A	1055, 1050, 1030, 1062, 1012, 1013	E-facing section of N end of outer bank	E	TP	16/04/2015
IMG_4943	A	1027, 1055, 1050, 1006, 1014	E-facing section of N end of outer bank	E	TP	16/04/2015
IMG_4944	A	1027, 1055, 1050, 1006, 1014	E-facing section of N end of outer bank	E	TP	16/04/2015
IMG_4945	A	1061	Post-excavation of palisade trench	E	TP	16/04/2015
IMG_4946	A	1061	Post-excavation of palisade trench	E	TP	16/04/2015
IMG_4947	A	1061	Post-excavation of palisade trench	E	TP	16/04/2015
IMG_4948	A	1061	Post-excavation of palisade trench	S	TP	16/04/2015
IMG_4949	A	1061	Post-excavation of palisade trench	S	TP	16/04/2015
IMG_4950	A	1061	Post-excavation of palisade trench	E	TP	16/04/2015
IMG_4951	A	1061	Post-excavation of palisade trench	E	TP	16/04/2015
IMG_4952	A	1061	Post-excavation of palisade trench	E	TP	16/04/2015
IMG_4953	A	1061	Post-excavation of palisade trench	S	TP	16/04/2015
IMG_4954	A	1061	Post-excavation of palisade trench	E	TP	16/04/2015
IMG_4955	B	2002 + 2005	W facing section of slot B	W	AD	16/04/2015
IMG_4956	B	2002 + 2005	E facing section of slot B	N	AD	16/04/2015
IMG_4957	B	2002 + 2005	Post-ex shot of slot B	NE	AD	16/04/2015
IMG_4958	B	2002 + 2005	N facing section of slot A	N	AD	16/04/2015
IMG_4959	B	2002 + 2005	Post-ex shot of slot A	NE	AD	16/04/2015
IMG_4960	A		W-facing section of counterscarp	W	TP	16/04/2015
IMG_4961	A		W-facing section of counterscarp	W	TP	16/04/2015
IMG_4962	A		E-facing section of counterscarp	E	TP	16/04/2015
IMG_4963	A		N-facing section of trench	N	TP	16/04/2015
IMG_4964	A	1064 + bedrock	1036 removed, burnt layer and bedrock on summit	E	TP	16/04/2015
IMG_4965	A	1064 + bedrock	1036 removed, burnt layer and bedrock on summit	E	TP	16/04/2015
IMG_4966	A	1064 + bedrock	1036 removed, burnt layer and bedrock on summit	E	TP	16/04/2015
IMG_4967	A	1064 + bedrock	1036 removed, burnt layer and bedrock on summit	N	TP	16/04/2015
IMG_4968	A	1064 + bedrock	1036 removed, burnt layer and bedrock on summit	N	TP	16/04/2015
IMG_4969	A	1064 + bedrock	1036 removed, burnt layer and bedrock on summit	N	TP	16/04/2015
IMG_4970	A		E facing section of ditch with K tins	E	TP	17/04/2015

IMG_4971	A		E facing section of ditch with K tins	E	TP	17/04/2015
IMG_4972	A	1017, 1022, 1023	E facing section, part 1, from top	E	CMAC	17/04/2015
IMG_4973	A	1017, 1022, 1023	E facing section, part 1, from top	E	CMAC	17/04/2015
IMG_4974	A	1017, 1022, 1023	E facing section, part 2, from top	E	CMAC	17/04/2015
IMG_4975	A	1017, 1022, 1023	E facing section, part 2, from top	E	CMAC	17/04/2015
IMG_4976	A	1017, 1024, 1054	E facing section, part 3, from top	E	CMAC	17/04/2015
IMG_4977	A	1017, 1024, 1054	E facing section, part 3, from top	E	CMAC	17/04/2015
IMG_4978	A	1017, 1024, 1054	E facing section, part 4, from top	E	CMAC	17/04/2015
IMG_4979	A	1017, 1024, 1054	E facing section, part 4, from top	E	CMAC	17/04/2015
IMG_4980	A	1017 + 1024	E facing section, part 5, from top	E	CMAC	17/04/2015
IMG_4981	A	1017 + 1024	E facing section, part 5, from top	E	CMAC	17/04/2015
IMG_4982	A	1017 + 1024	E facing section, part 6, from top (Sondage)	E	CMAC	17/04/2015
IMG_4983	A	1017 + 1024	E facing section, part 6, from top	E	CMAC	17/04/2015
IMG_4984	A	1017 + 1024	E facing section, part 7, from top	E	CMAC	17/04/2015
IMG_4985	A	1017 + 1024	E facing section, part 7, from top	E	CMAC	17/04/2015
IMG_4986	A	1017 + 1024	E facing section, part 8, from top	E	CMAC	17/04/2015
IMG_4987	A	1017 + 1024	E facing section, part 8, from top	E	CMAC	17/04/2015
IMG_4988	A	1017 + 1024	E facing section, part 9, from top	E	CMAC	17/04/2015
IMG_4989	A	1017 + 1024	E facing section, part 9, from top	E	CMAC	17/04/2015
IMG_4990	A	1017, 1024, 1034, 1038	E facing section, part 10, from top	E	CMAC	17/04/2015
IMG_4991	A	1017, 1024, 1034, 1038	E facing section, part 10, from top	E	CMAC	17/04/2015
IMG_4992	A	1017, 1024, 1034	E facing section, part 11, from top	E	CMAC	17/04/2015
IMG_4993	A	1017, 1024, 1034	E facing section, part 11, from top (Sondage)	E	CMAC	17/04/2015
IMG_4994	A	1017 + 1034	E facing section, part 12, from top	E	CMAC	17/04/2015
IMG_4995	A	1017 + 1034	E facing section, part 12, from top	E	CMAC	17/04/2015
IMG_4996	A	1017 + 1034	E facing section, part 13, from top	E	CMAC	17/04/2015
IMG_4997	A	1017 + 1034	E facing section, part 13, from top	E	CMAC	17/04/2015
IMG_4998	A	1017 + 1034	Shot to show where 12 and 13 meet	E	CMAC	17/04/2015
IMG_4999	A		General view of East facing section	E	CMAC	17/04/2015
IMG_5000	A		General view of East facing section	E	CMAC	17/04/2015
IMG_5001	A		General view of East facing section	E	CMAC	17/04/2015
IMG_5002	A		General view of East facing section	E	CMAC	17/04/2015
IMG_5003	A	1001 + 1029	W facing section from bottom - Part 1	E	CMAC	17/04/2015
IMG_5004	A	1001 + 1029	W facing section from bottom - Part 1	E	CMAC	17/04/2015
IMG_5005	A	1001, 1029, 1034	W facing section from bottom - Part 2	E	CMAC	17/04/2015
IMG_5006	A	1001, 1029, 1034	W facing section from bottom - Part 2	E	CMAC	17/04/2015
IMG_5007	A	1001, 1029, 1034	W facing section from bottom - Part 2	W	CMAC	17/04/2015
IMG_5008	A	1001, 1029, 1034	W facing section from bottom - Part 3	W	CMAC	17/04/2015
IMG_5009	A	1001, 1029, 1034	W facing section from bottom - Part 3	W	CMAC	17/04/2015
IMG_5010	A	1001 + 1024	W facing section from bottom - Part 4	W	CMAC	17/04/2015
IMG_5011	A	1001 + 1024	W facing section from bottom - Part 4	W	CMAC	17/04/2015
IMG_5012	A	1001 + 1024	W facing section from bottom - Part 5	W	CMAC	17/04/2015
IMG_5013	A	1001 + 1024	W facing section from bottom - Part 5	W	CMAC	17/04/2015
IMG_5014	A	1001 + 1024	W facing section from bottom - Part 6	W	CMAC	17/04/2015
IMG_5015	A	1001 + 1024	W facing section from bottom - Part 6	W	CMAC	17/04/2015
IMG_5016	A	1001 + 1024	W facing section from bottom - Part 7	W	CMAC	17/04/2015
IMG_5017	A	1001 + 1024	W facing section from bottom - Part 7	W	CMAC	17/04/2015
IMG_5018	A	1001, 1024, 1036	W facing section from bottom - Part 8	W	CMAC	17/04/2015
IMG_5019	A	1001, 1024, 1036	W facing section from bottom - Part 8	W	CMAC	17/04/2015
IMG_5020	A	1001, 1024, 1036	W facing section from bottom - Part 8	W	CMAC	17/04/2015
IMG_5021	A	1017, 1036, 1024	W facing section from bottom - Part 9	W	CMAC	17/04/2015
IMG_5022	A	1017, 1036, 1024	W facing section from bottom - Part 9	W	CMAC	17/04/2015

IMG_5023	A	1017, 1036, 1064	W facing section from bottom - Part 10	W	CMAC	17/04/2015
IMG_5024	A	1017, 1036, 1064	W facing section from bottom - Part 10	W	CMAC	17/04/2015
IMG_5025	A	1017, 1036, 1064	W facing section from bottom - Part 10	W	CMAC	17/04/2015
IMG_5026	A	1017, 1022, 1023	W facing section from bottom - Part 11	W	CMAC	17/04/2015
IMG_5027	A	1017, 1022, 1023	W facing section from bottom - Part 11	W	CMAC	17/04/2015
IMG_5028	A	1017, 1022, 1023	W facing section from bottom - Part 11	W	CMAC	17/04/2015
IMG_5029	A	1017, 1020, 1022, 1023	W facing section from bottom - Part 12	W	CMAC	17/04/2015
IMG_5030	A	1017, 1020, 1022, 1023	W facing section from bottom - Part 12	W	CMAC	17/04/2015
IMG_5031	A	1017, 1020, 1022, 1023	W facing section from bottom - Part 12	W	CMAC	17/04/2015
IMG_5032	A	1017, 1020, 1022, 1023	W facing section from bottom - Part 12	W	CMAC	17/04/2015
IMG_5033	A		E facing section with K tins (mid ditch)	E	TP	17/04/2015
IMG_5034	A		E facing section with K tins (mid ditch)	E	TP	17/04/2015
IMG_5035	A		E facing section with K tins and bank	E	TP	17/04/2015
IMG_5036	A		E facing section with K tins and bank	E	TP	17/04/2015
IMG_5037	A		W facing section of outer bank K tin 1	W	TP	17/04/2015
IMG_5038	A		W facing section of outer bank K tin 1	W	TP	17/04/2015
IMG_5039	A		W facing section of outer bank K tin 2	W	TP	17/04/2015
IMG_5040	A		W facing section of outer bank K tin 2	W	TP	17/04/2015
IMG_5041	A		Stone in middle bank - W of trench	S	TP	17/04/2015
IMG_5042	A		Stone in middle bank - W of trench	S	TP	17/04/2015
IMG_5043	A		Stone in middle bank - W of trench	S	TP	17/04/2015
IMG_5044	A		Stone in middle bank - W of trench	S	TP	17/04/2015
IMG_5045	A		Stone in middle bank - W of trench	W	TP	17/04/2015
IMG_5046	A		Stone in middle bank - W of trench	W	TP	17/04/2015
IMG_5047	A		W facing section of summit charcoal feature and K tin	W	TP	17/04/2015
IMG_5048	A		W facing section of summit charcoal feature and K tin	W	TP	17/04/2015
IMG_5049	A	1061, 1060	W-facing section of outer bank and palisade	W	TP	17/04/2015
IMG_5050	A	1061, 1060	W-facing section of outer bank and palisade	W	TP	17/04/2015
IMG_5051	A	1061, 1060	W-facing section of outer bank and palisade	W	TP	17/04/2015
IMG_5052	A	1063	W-facing section of pit [1063]	W	TP	17/04/2015
IMG_5053	A		General view of post-excavation of outer bank	NW	TP	17/04/2015
IMG_5054	A		General view of post-excavation of TrenchA	SW	TP	17/04/2015
IMG_5055	A	1007, 1014, 1044, 1063	W-facing section of rock cut pit [1063] & middle bank	W	TP	17/04/2015
IMG_5056	A	1007, 1006, 1044, 1063	W-facing section of rock cut pit [1063] & middle bank	W	TP	17/04/2015
IMG_5057	A	1007, 1014, 1044, 1063	W-facing section of rock cut pit [1063] & middle bank	W	TP	17/04/2015
IMG_5058	A	1007, 1006, 1044, 1063	W-facing section of rock cut pit [1063] & middle bank	W	TP	17/04/2015
IMG_5060	B		Post-excavation of Trench B	SW	TP	17/04/2015
IMG_5061	B		Post-excavation of Trench B	SW	TP	17/04/2015
IMG_5062	B		Post-excavation of Trench B	SW	TP	17/04/2015
IMG_5063	B		Post-excavation of Trench B	SE	TP	17/04/2015
IMG_5064	B		Post-excavation of Trench B	SE	TP	17/04/2015
IMG_5065	B		Post-excavation of Trench B	SE	TP	17/04/2015

IMG_5066	B		Post-excavation of Trench B	SE	TP	17/04/2015
IMG_5067	B		Post-excavation of Trench B	SE	TP	17/04/2015
IMG_5068	B		Post-excavation of Trench B	SE	TP	17/04/2015
IMG_5069	A		Deturfing cake		TP	17/04/2015
IMG_5070	A		Deturfing cake		TP	17/04/2015
IMG_5071	A		Deturfing cake + Leonie		TP	17/04/2015
IMG_5072	A		Deturfing cake		TP	17/04/2015
IMG_5073	B		Trench B returfed	E	TP	17/04/2015
IMG_5074	B		Trench B returfed	E	TP	17/04/2015
IMG_5075	B		Trench B returfed	SE	TP	17/04/2015
IMG_5076	B		Trench B returfed	SE	TP	17/04/2015
IMG_5077	B		Trench B returfed	W	TP	17/04/2015
IMG_5078	A		Team backfill	S	TP	17/04/2015
IMG_5079	A		Team backfill	S	TP	17/04/2015
IMG_5080	A		Team backfill	S	TP	17/04/2015
IMG_5081	A		Team backfill	S	TP	17/04/2015
IMG_5082	A		Summit returfed	N	TP	20/04/2015
IMG_5083	A		Summit returfed	N	TP	20/04/2015
IMG_5084	A		Slope to summit returfed	S	TP	20/04/2015
IMG_5085	A		Slope to summit returfed	S	TP	20/04/2015
IMG_5086	A		Middle bank backfilled	S	TP	20/04/2015
IMG_5087	A		Middle bank backfilled	S	TP	20/04/2015
IMG_5088	A		S end of the trench returfed	S	TP	20/04/2015
IMG_5089	A		S end of the trench returfed	S	TP	20/04/2015
IMG_5090	A		S end of the trench returfed	S	TP	20/04/2015
IMG_5091	A		S end of the trench returfed	N	TP	20/04/2015
IMG_5092	A		S end of the trench returfed	N	TP	20/04/2015