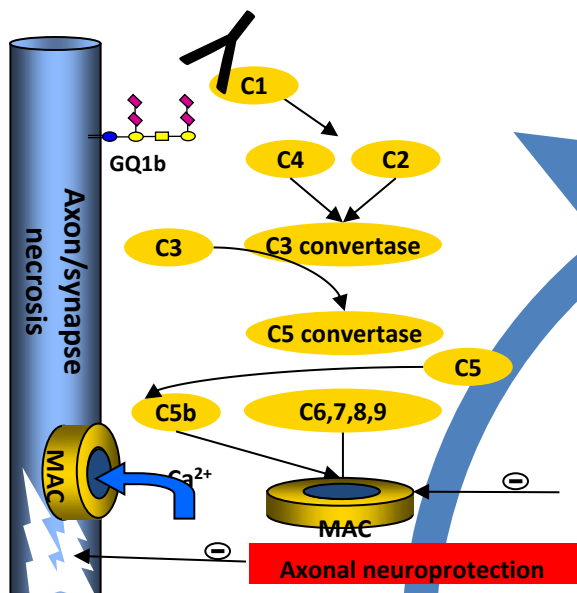


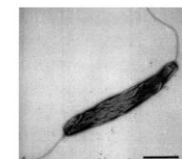
# OVERVIEW OF POST-INFECTIOUS AUTOIMMUNE NEUROPATHY RESEARCH OPPORTUNITIES



**DEVELOPING THERAPIES  
AND INITIATING CLINICAL TRIALS**  
e.g. Complement inhibition

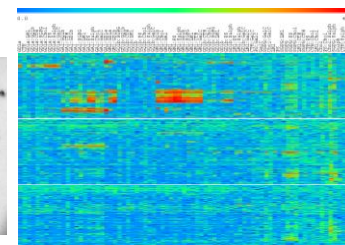
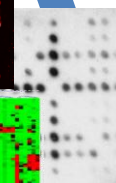
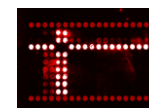


**LARGE CLINICAL DATABASES**  
'IGOS1000' is recruiting in  
120 centres globally  
**ONE CENTRE IN AFRICA (Capetown)**  
(DNA, serum, clinical data,  
outcome, prognosis, clinimetrics)



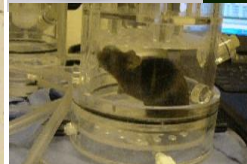
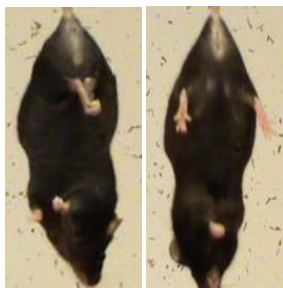
**Campylobacter  
jejuni**

**BIOMARKER DISCOVERY**  
**AUTOANTIBODIES**  
**MYELIN AND AXONAL INJURY**  
**INFECTIOUS AND**  
**GENETIC RISK FACTORS**



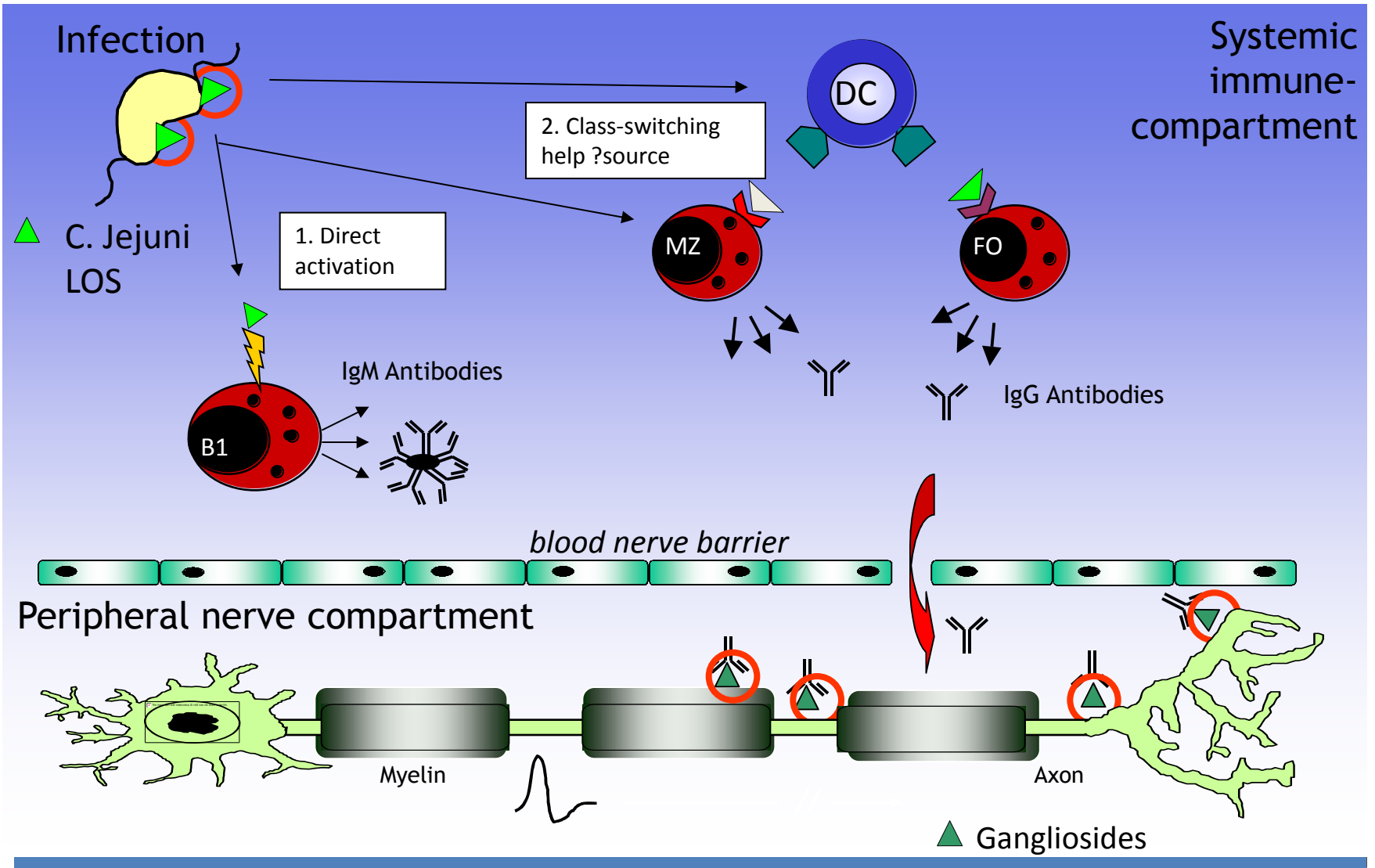
**900 sample neuropathy and  
case control serology study  
of lipid antibody markers  
(with ICDDR, Dhaka, Bangladesh)**

**POST INFECTIOUS ANIMAL MODELS  
OF AUTOIMMUNE NEUROPATHY  
BEHAVIOUR, PHYSIOLOGY,  
MORPHOLOGY, TREATMENT**



**WILLISON LAB:**  
hugh.willison@glasgow.ac.uk

# GUILLAIN-BARRE SYNDROME IS THE MAJOR POST-INFECTIOUS NEUROPATHY



# Acknowledgements



**University of Glasgow - The Willison Lab**

**Govind Chavada Motoi Kuwahara Denggao Yao  
Francesc Galban Joanna Cappell Rhona McGonigal  
Jennifer Barrie Angelika Rupp Madeleine Cunningham  
Susan Halstead Hugh Willison Simon Rinaldi  
Amy Davidson Emilien Delmont Claire Paton**

**welcome**trust

